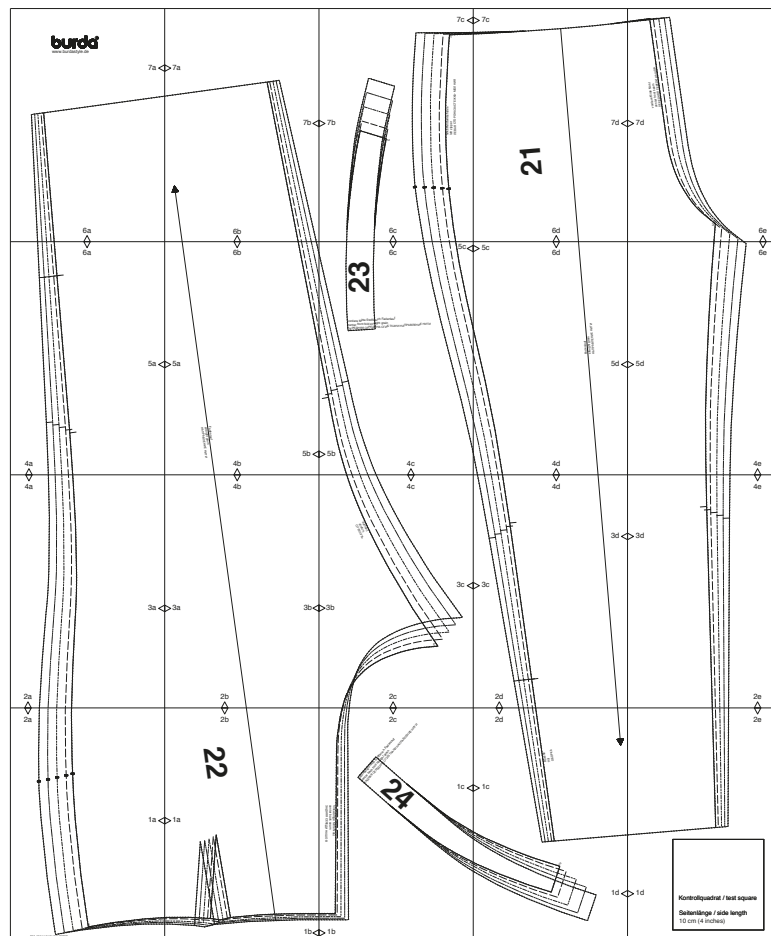


burda style Download–Schnitt

Modell 127 burda style 06/2020



Copyright 2020 by Verlag Aenne Burda GmbH & Co. KG, Hubert-Burda Platz 2, D-77652 Offenburg
Sämtliche Modelle, Schnittteile und Zeichnungen stehen unter Urheberschutz, gewerbliches Nacharbeiten ist untersagt.
Der Verlag haftet nicht für Schäden, die durch unsachgemäße Handhabung des Schnitts, der Materialien,
unsachgemäße Ausführung der Tipps und Anleitungen oder unsachgemäße Nutzung der Modelle entstehen.

2a

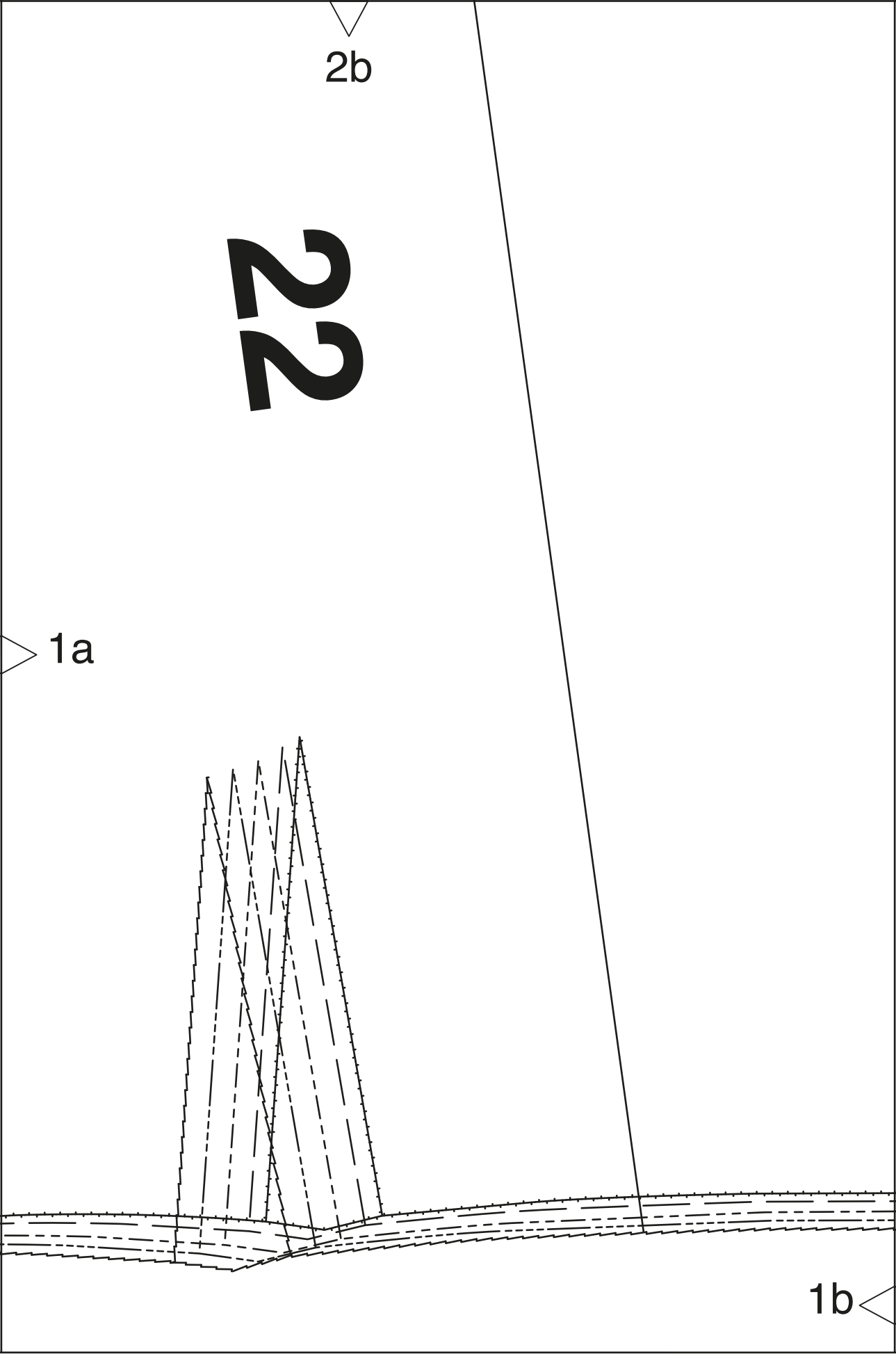
1a

2b

22

1a

1b



2c

rückwärtige Mitte Stoffbruch Fadenlauf
center back fold straight grain
ЗАДНЯЯ СЕРЕДИНА СГИБЪ ТКАНИ НАПРАВЛЕНИЕ НИТИ

24

1c

rückwärtige Mitte Naht
center back seam
ЗАДНЯЯ СЕРЕДИНА ШОВ

1b

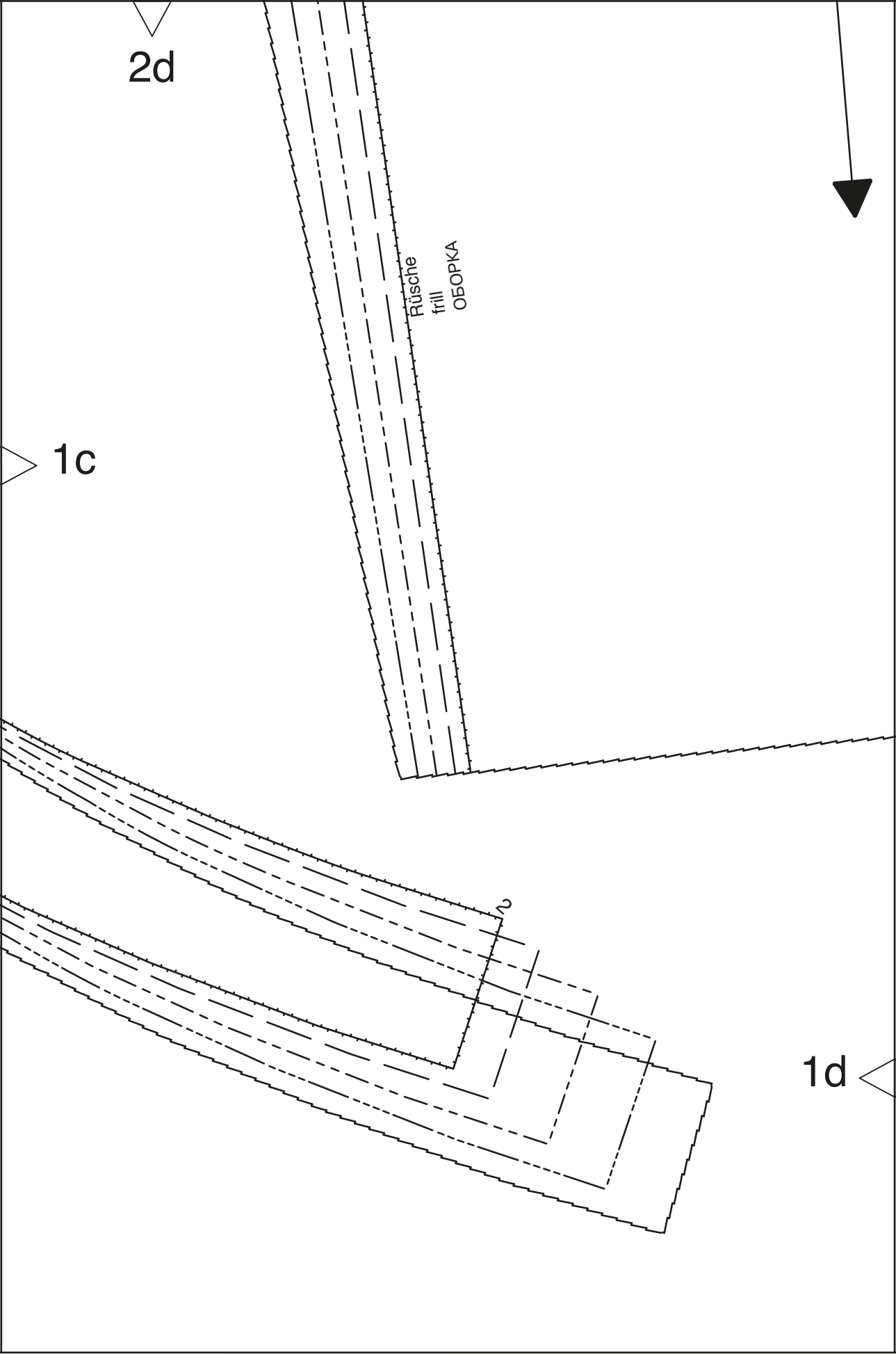
2d



Rüsche
frill
ОБОПКА

1c

1d





2e

The diagram shows a large rectangular area with a vertical strip on the right side. The strip is divided into three sections: a solid line on the left, a dashed line in the middle, and a solid line on the right. A dimension line with a downward-pointing arrow is labeled '2e'. A dimension line with a rightward-pointing arrow is labeled '1d'. A box in the lower right contains text describing the 'Kontrollquadrat / test square' with a side length of 10 cm (4 inches).

1d

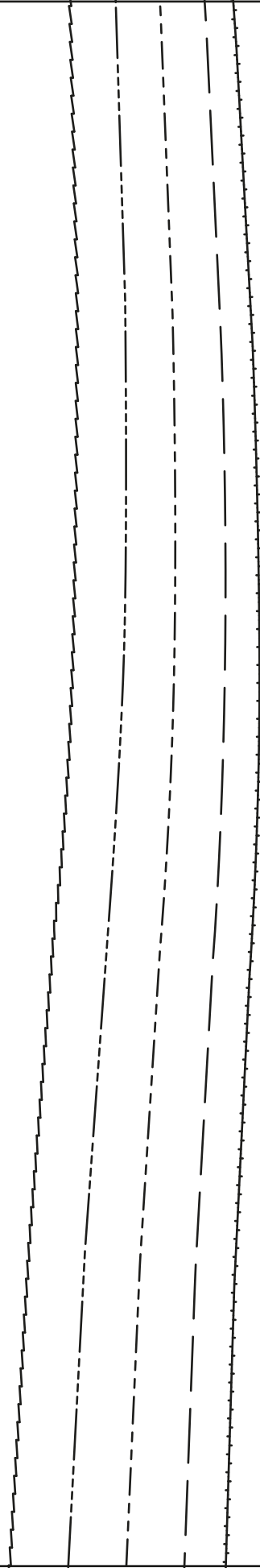
Kontrollquadrat / test square

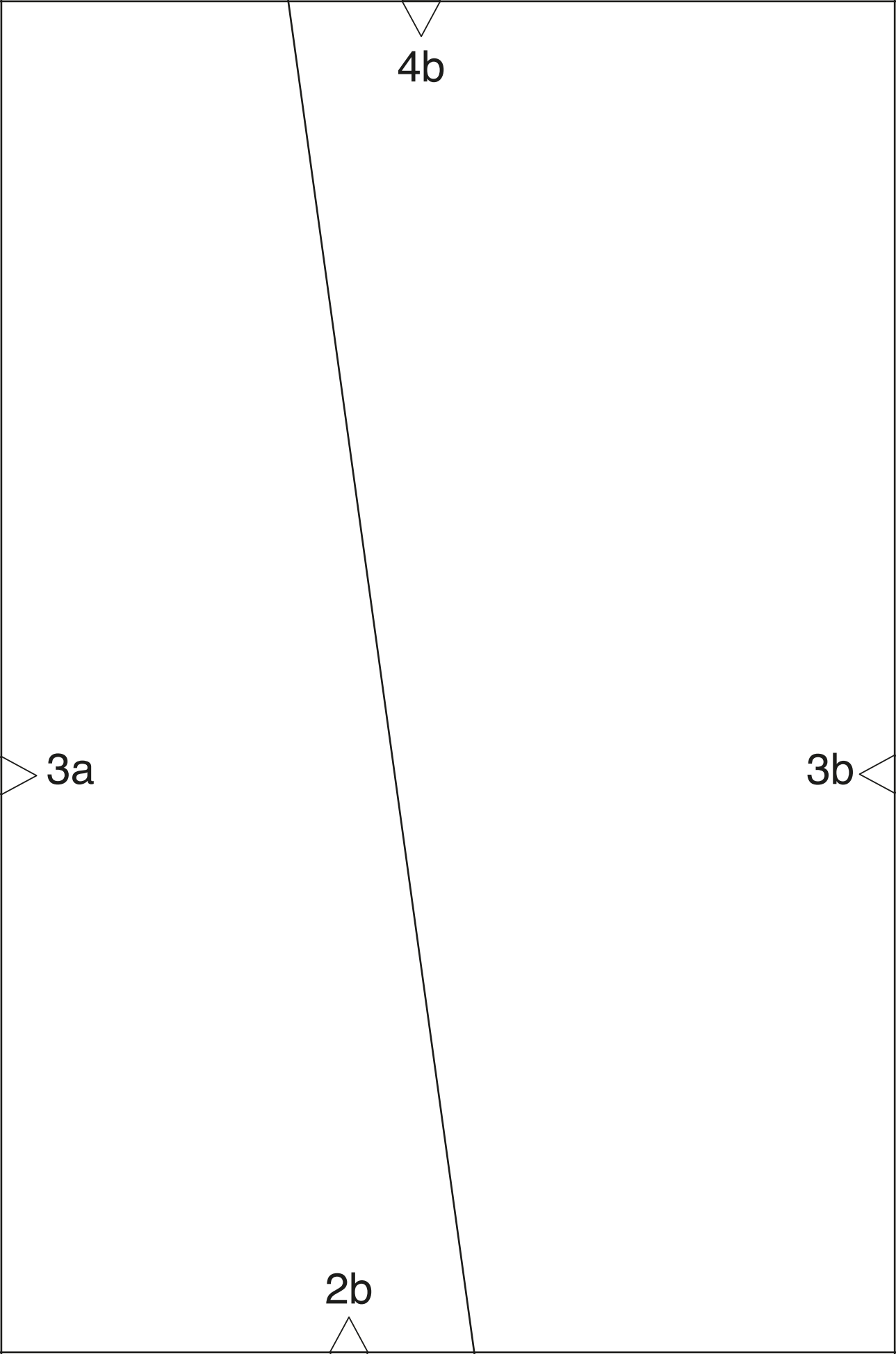
Seitenlänge / side length
10 cm (4 inches)

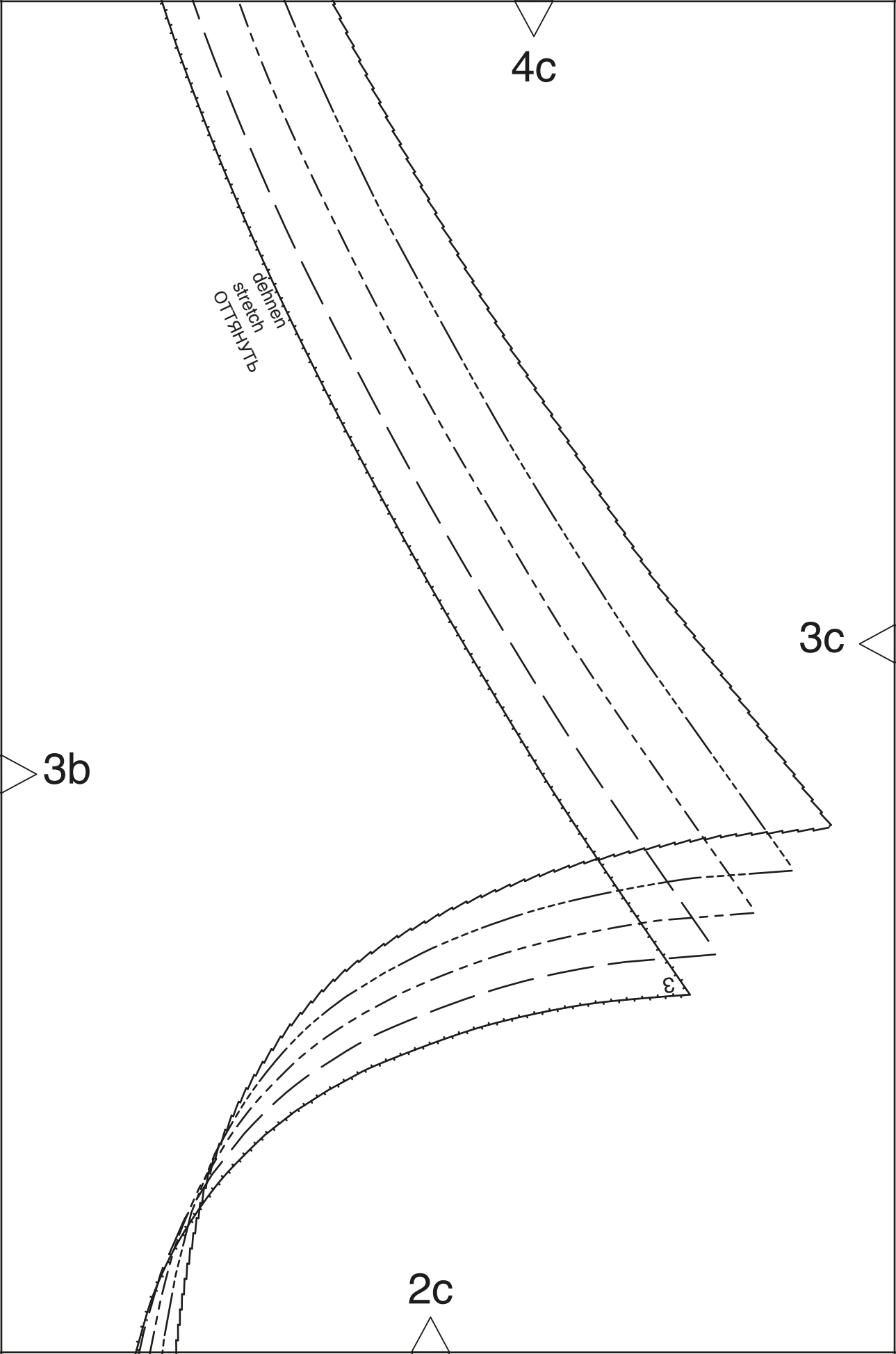
4a

2a

3a







4c

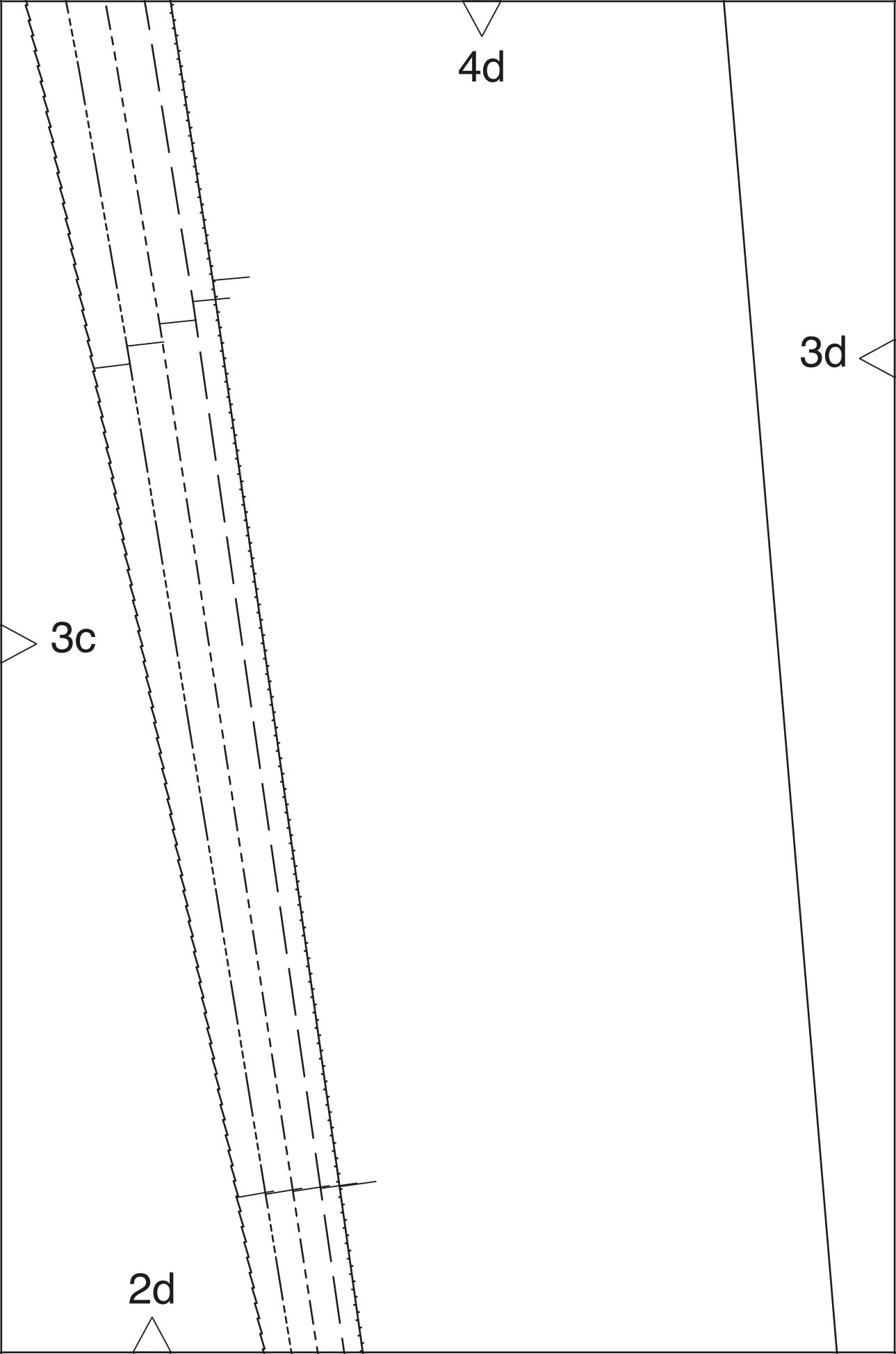
dehnen
stretch
ОТТЯНУТЬ

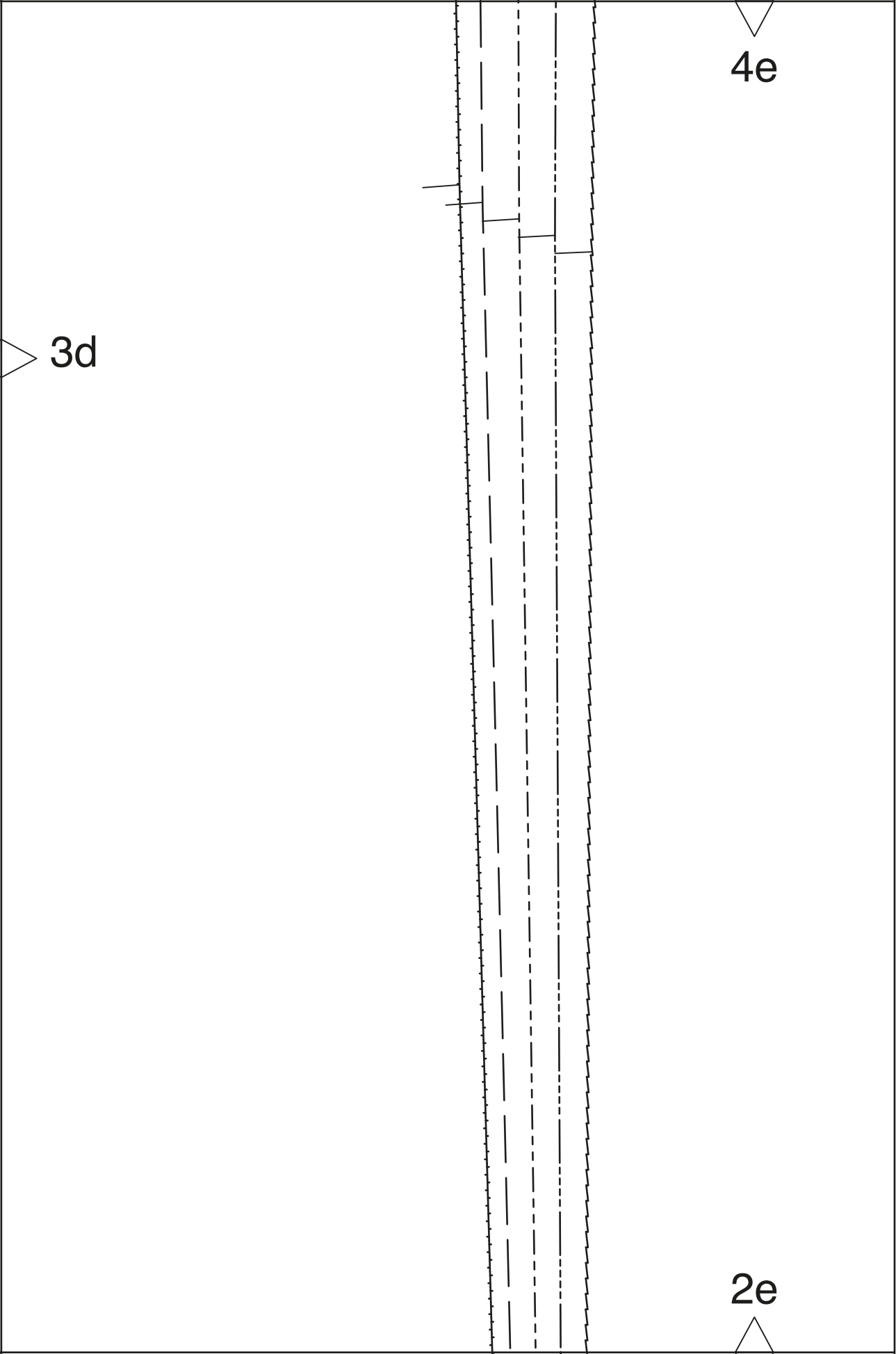
3c

3b

2c

ε





3d

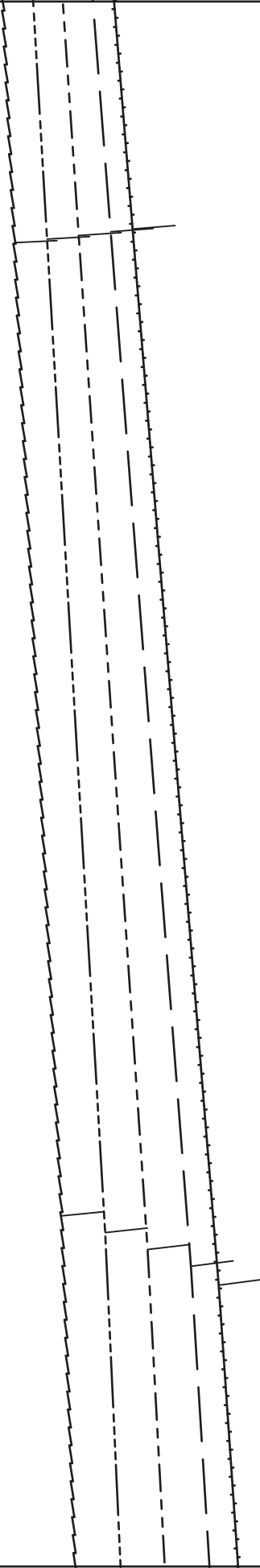
4e

2e

6a

5a

4a



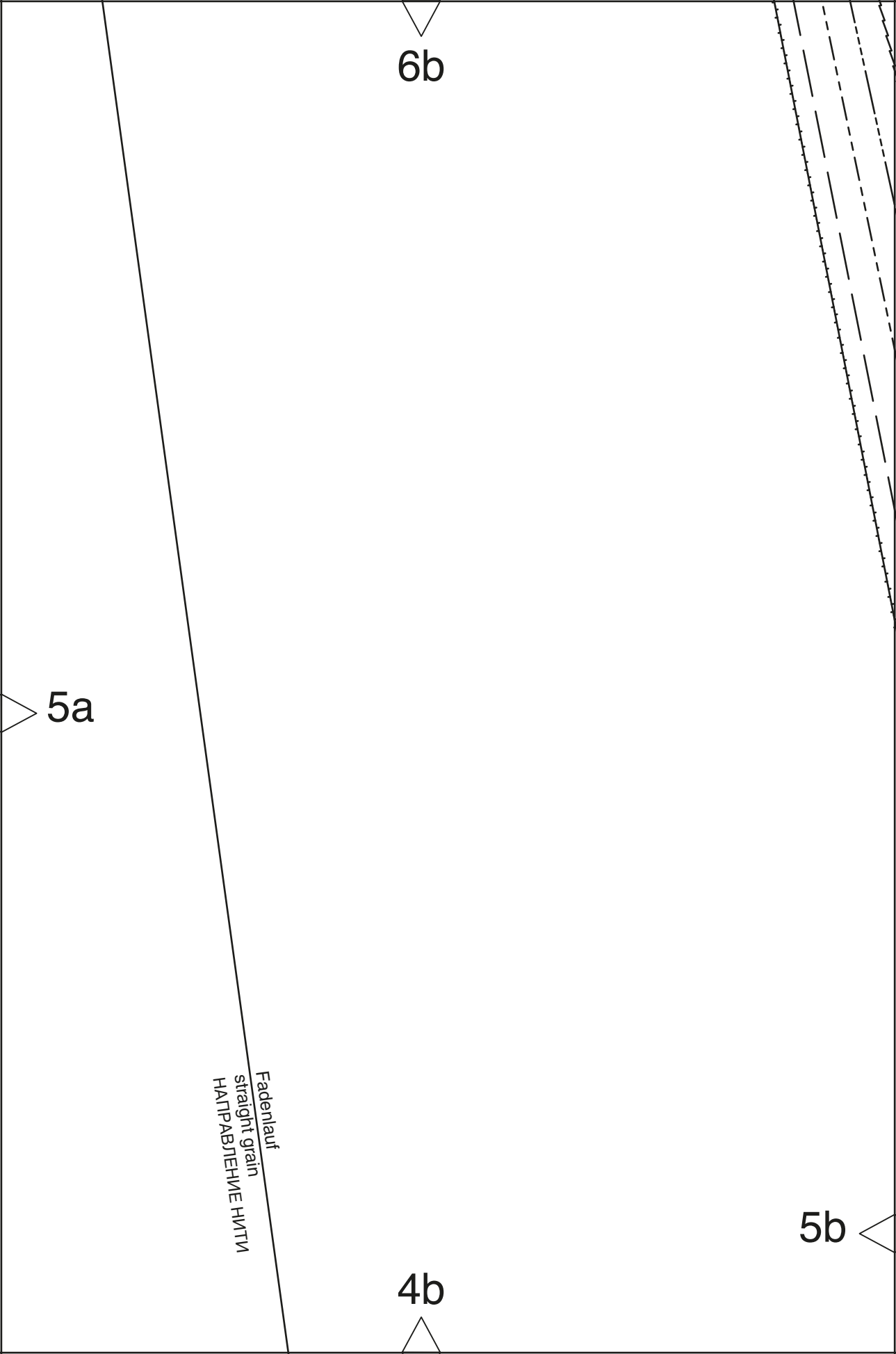
6b

5a

Fadenlauf
straight grain
НАПРАВЛЕНИЕ НИТКИ

4b

5b



23

vordere Mitte Stoffbruch Fadenlauf
center front fold straight grain
ПЕРЕДНЯЯ СЕРЕДИНА СГИБ ТКАНИ НАПРАВЛЕНИЕ НИТИ

6c

5c

5b

4c

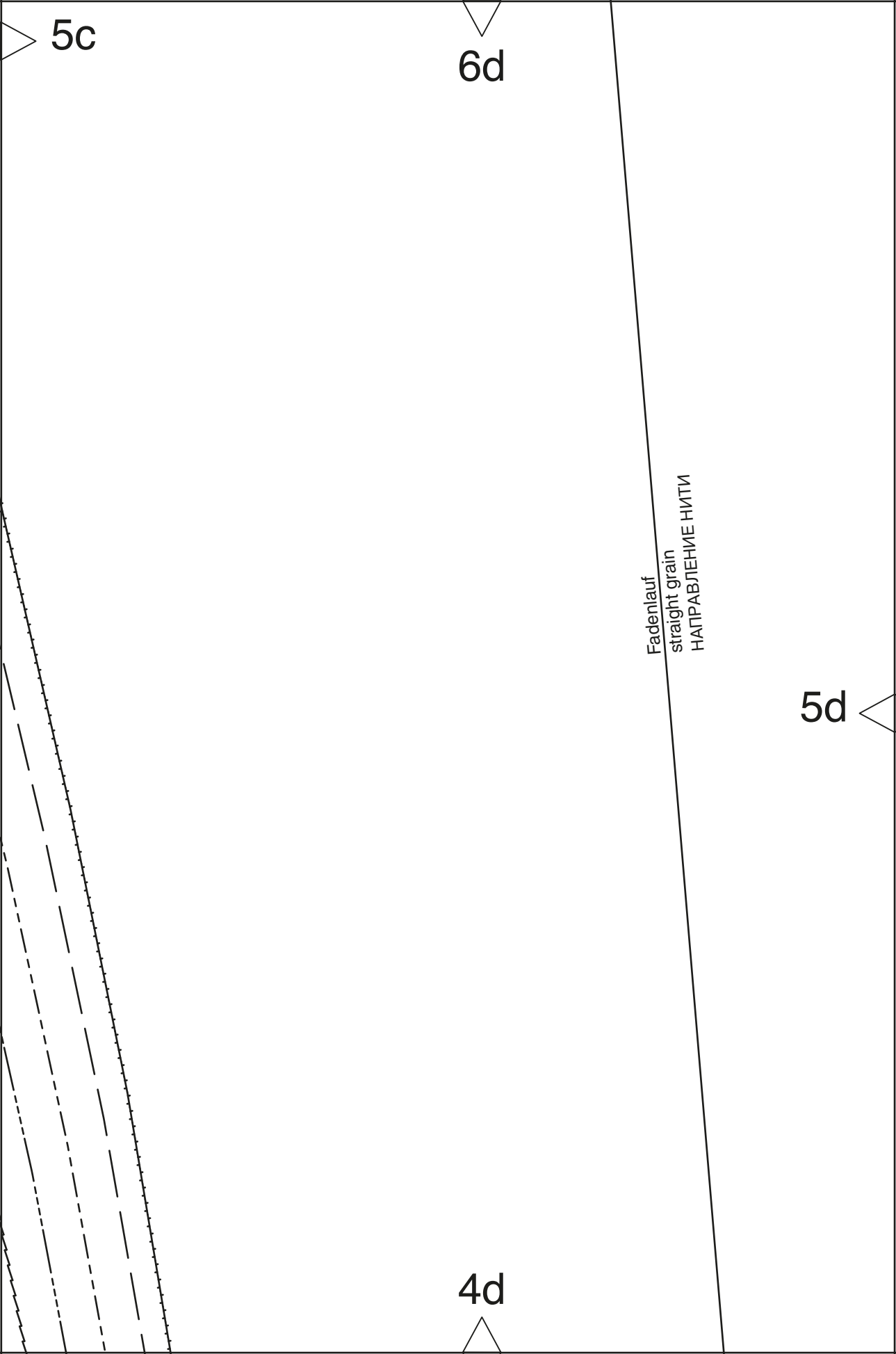
5c

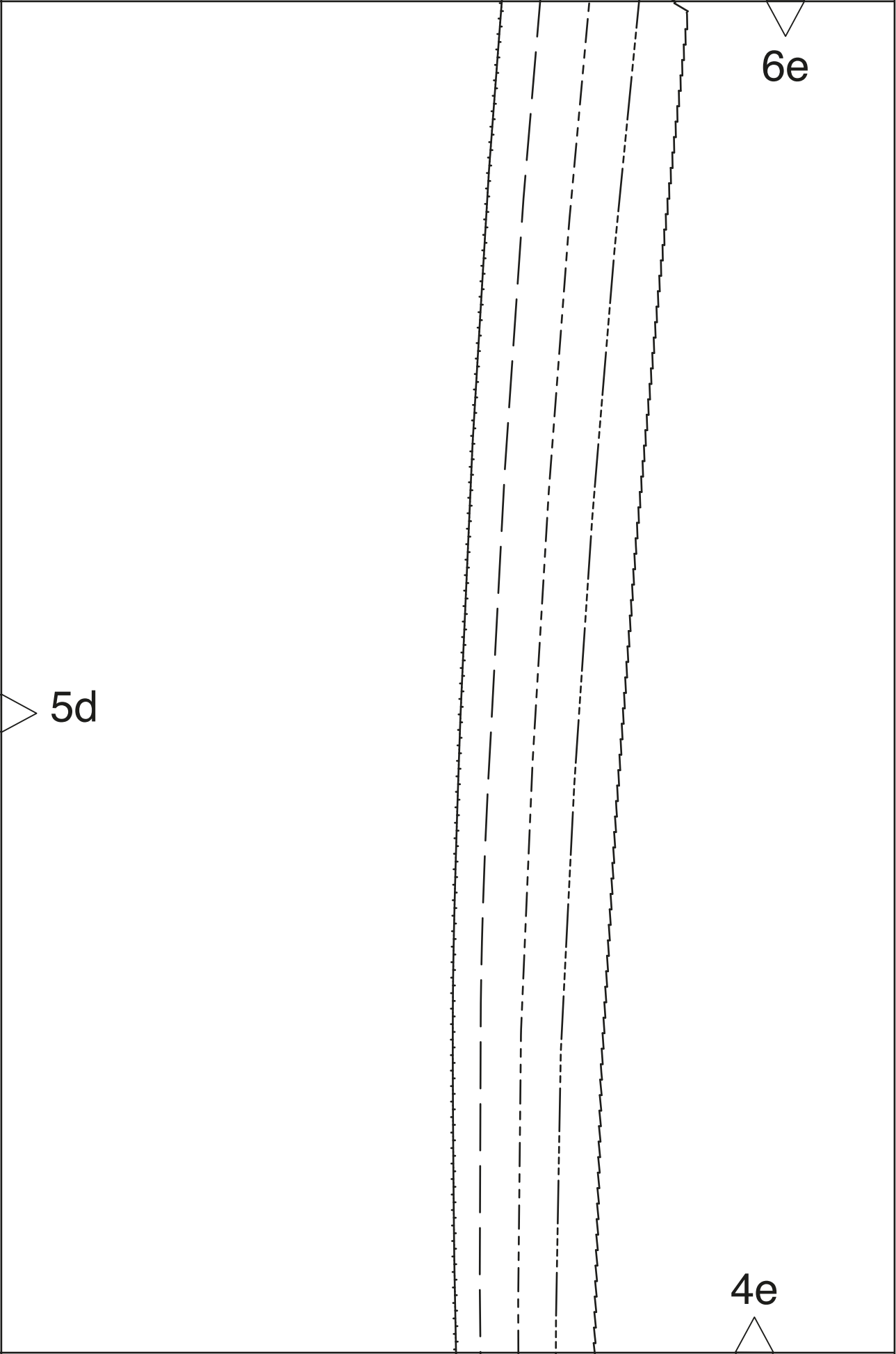
6d

5d

4d

Fadenlauf
straight grain
НАПРАВЛЕНИЕ НИТИ

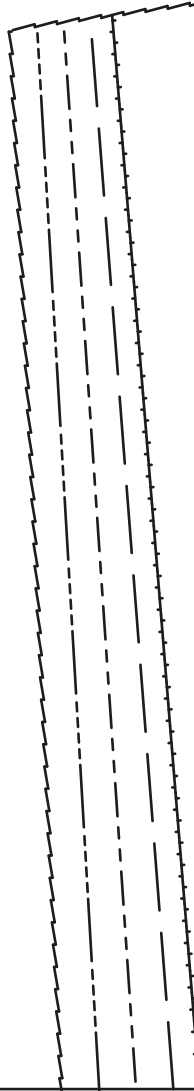
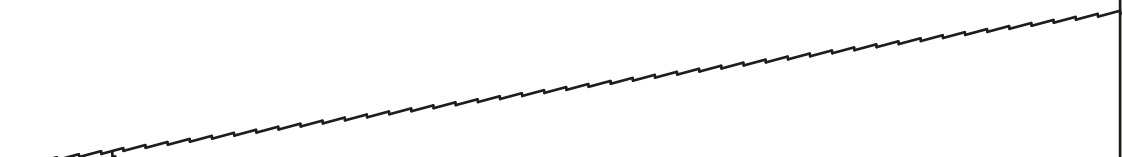




burda[®]

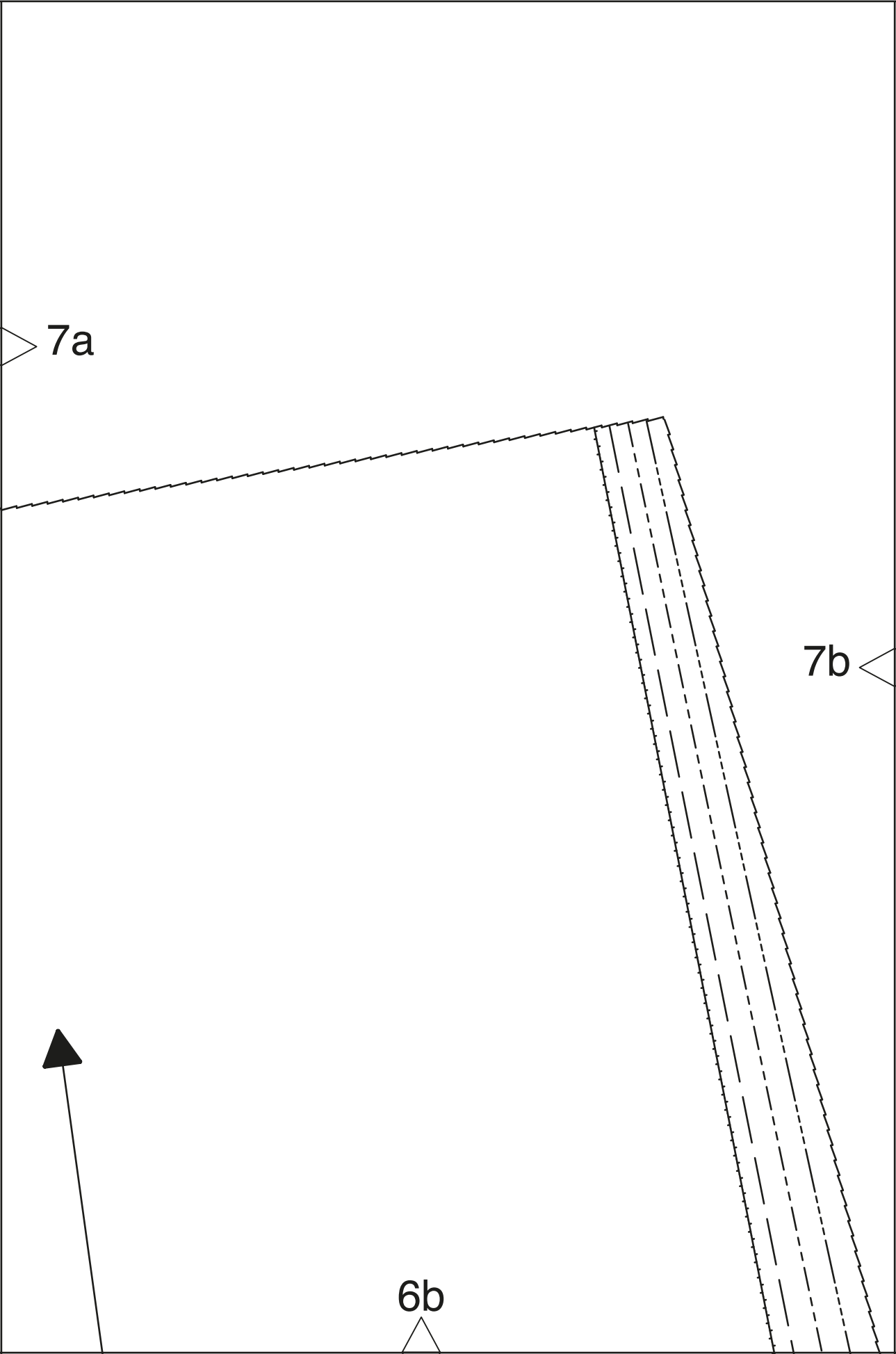
www.burdastyle.de

7a



6a



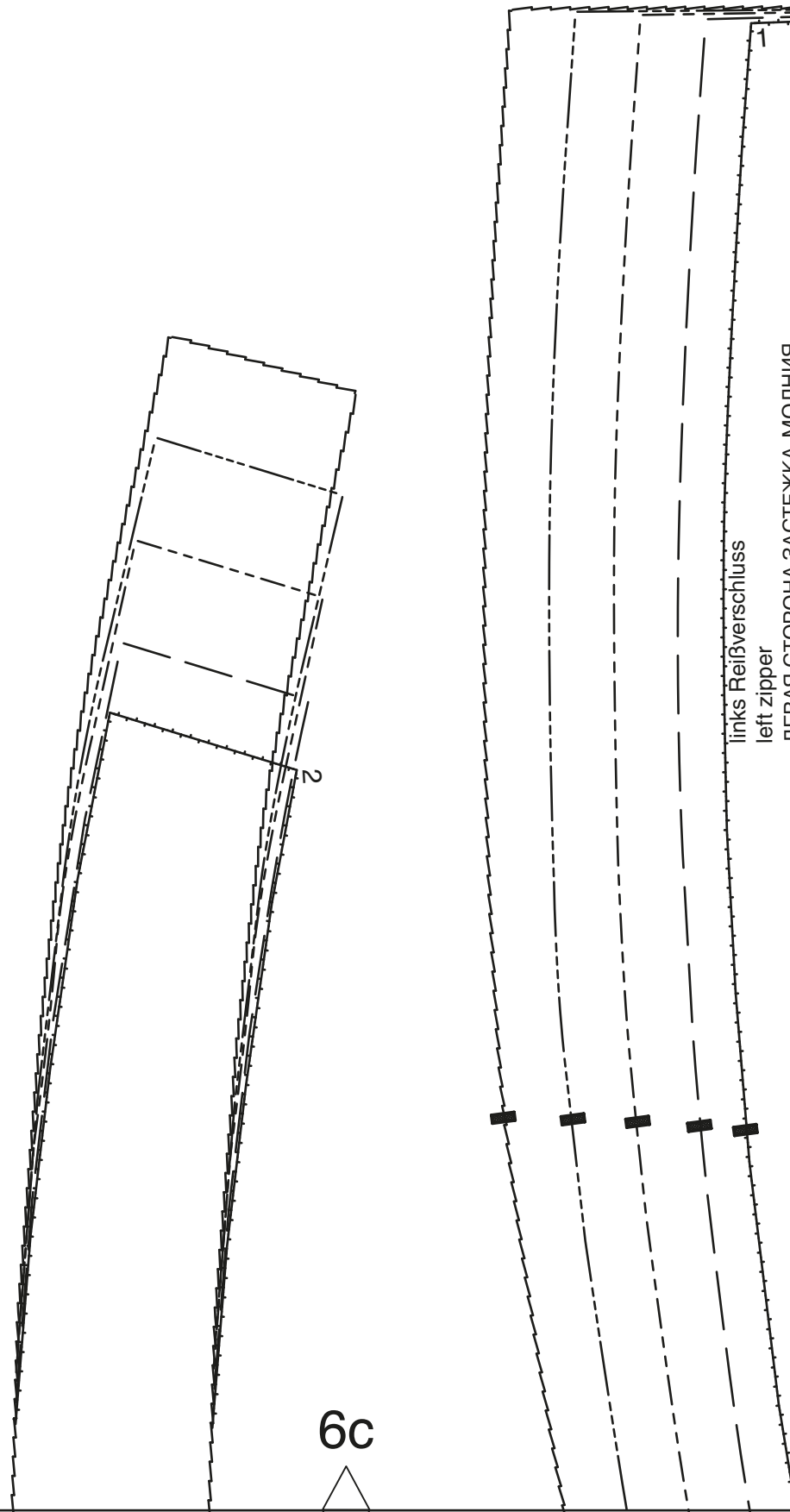


7c

7b

links Reißverschluss
left zipper
ЛЕВАЯ СТОРОНА ЗАСТЕЖКА-МОЛНИЯ

6c



7c

7d

21

6d

