

Kontrolmål
10 x 10 cm

0

01

02

B

A

3

03

vordere Mitte Fadenlauf
center front straight grain
ПЕРЕДНЯЯ СЕРЕДИНА НАПРАВЛЕНИЕ НИТИ

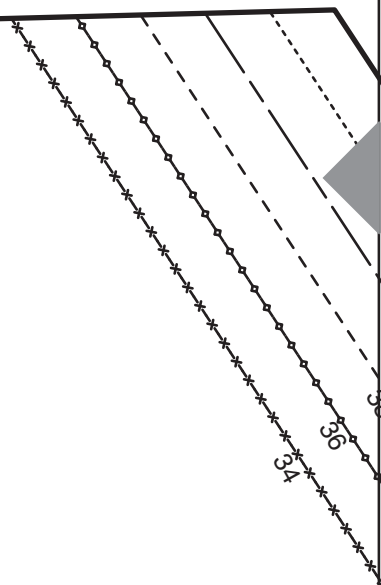
04

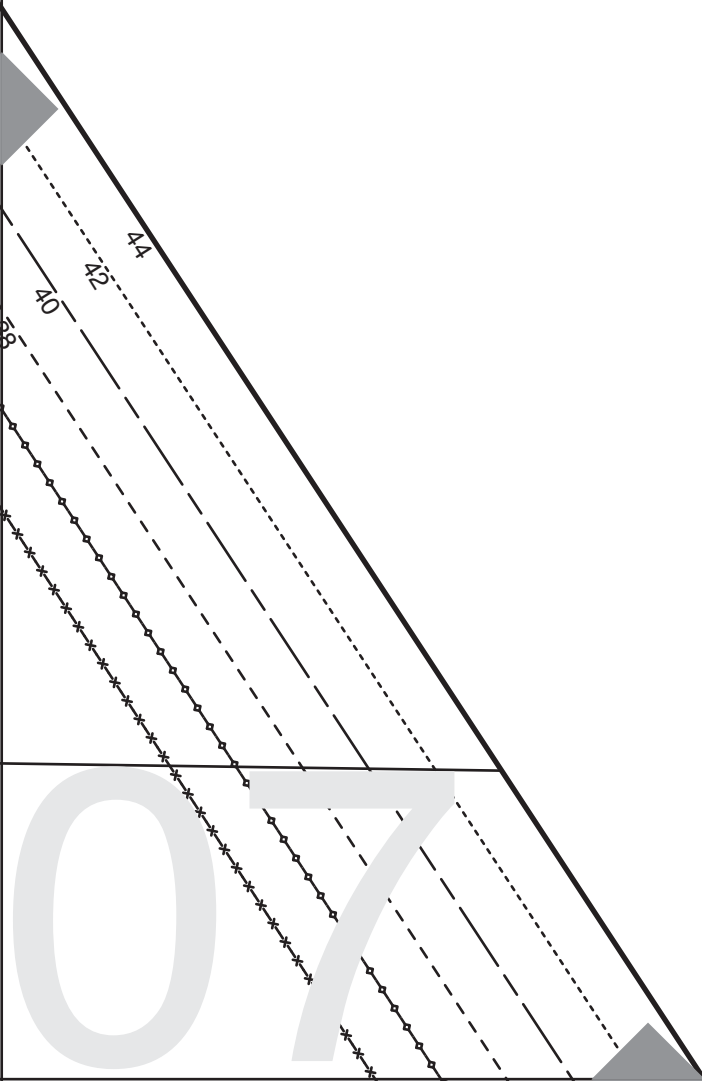
05

06

www.9

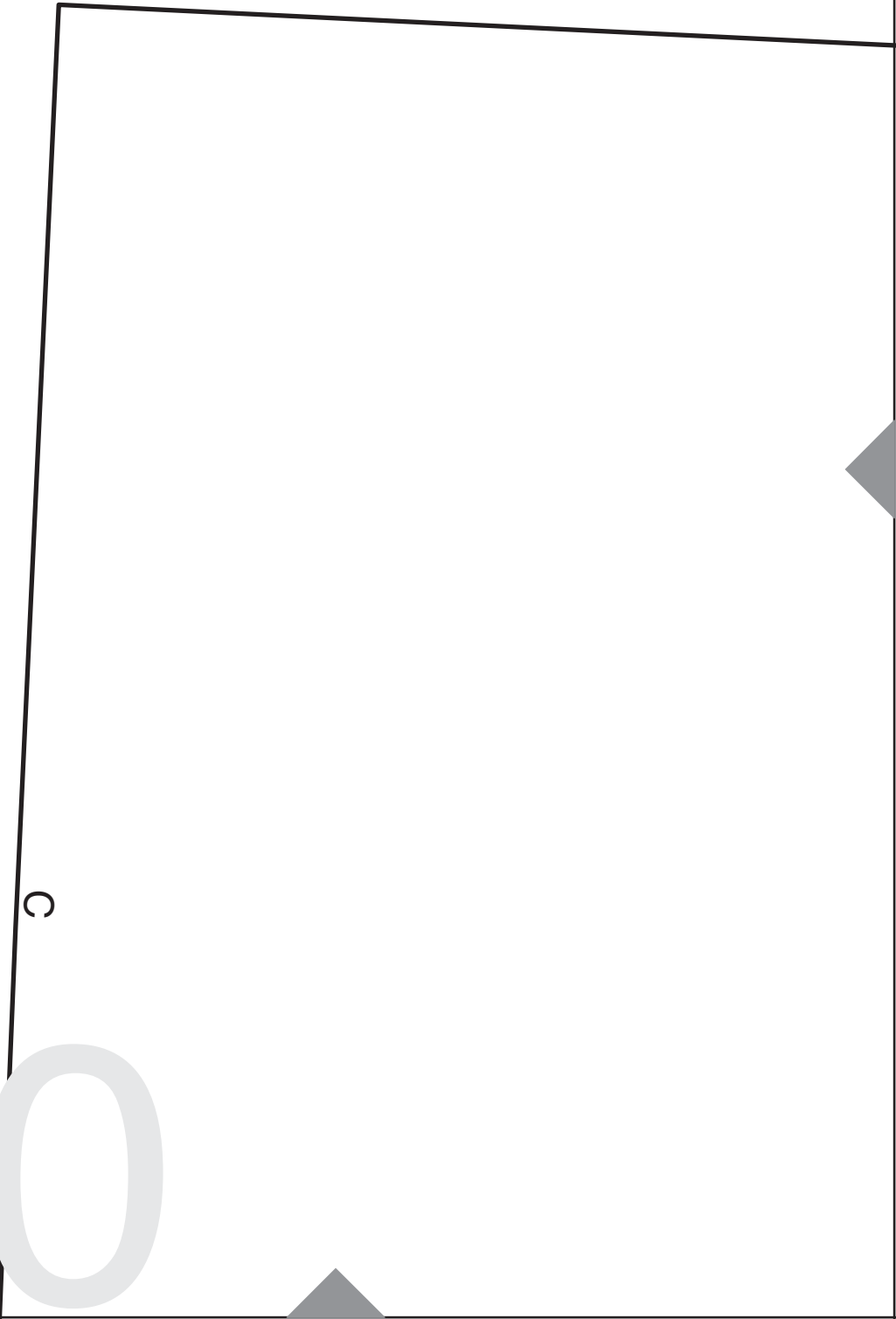
N 22





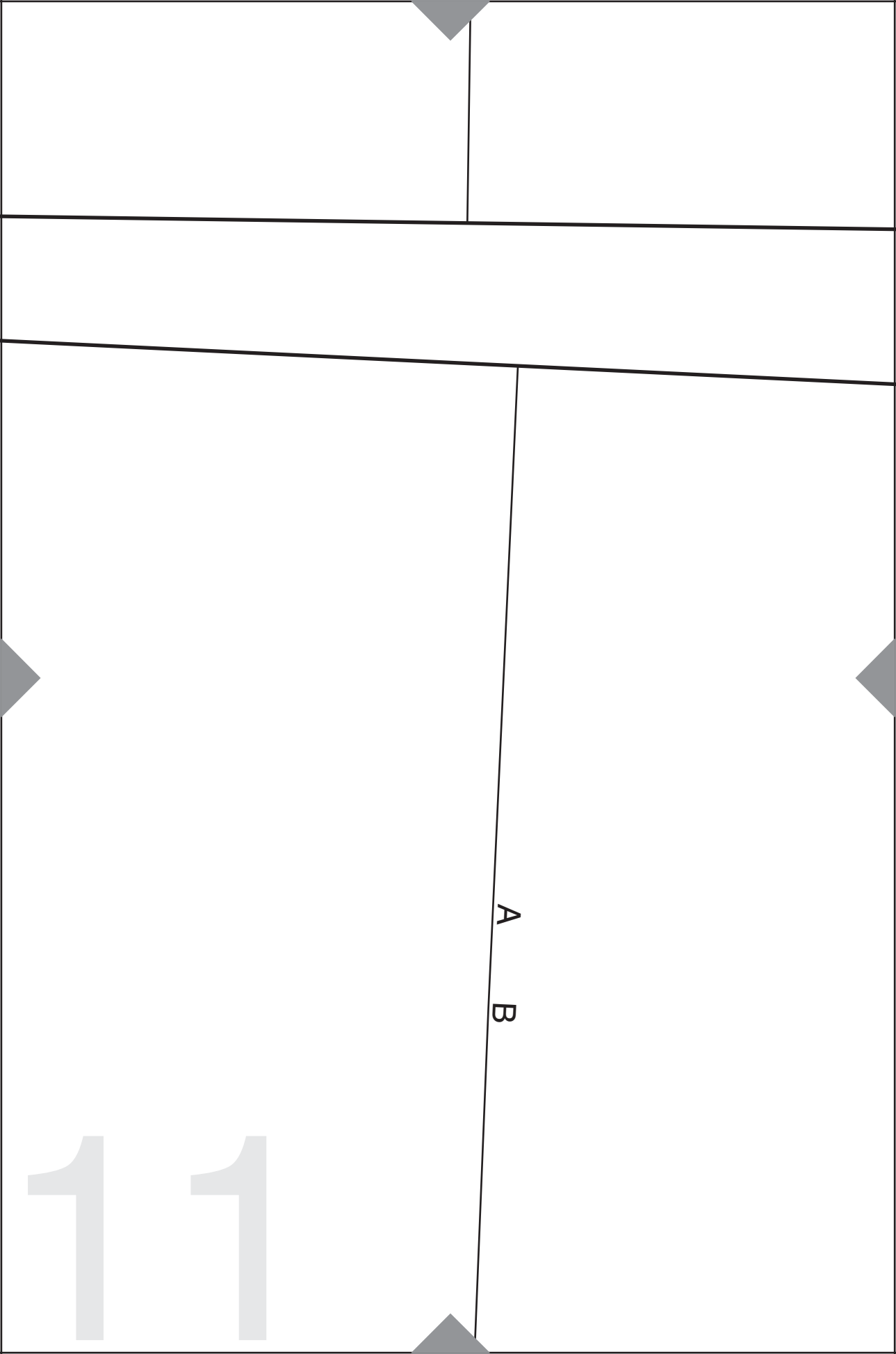
08

09



c

10

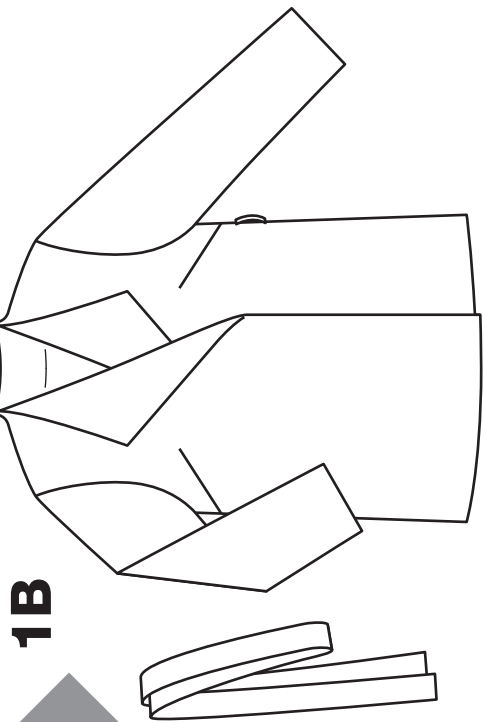


A
B



12

13



1B

Taille
waist
ТАЛИЯ

englisch / russisch

Größen - sizes 34 – 44

Gr. 34	x	x	x	x	x	x	x	x	x	x	x	x	x	x	x
Gr. 36	◇	◇	◇	◇	◇	◇	◇	◇	◇	◇	◇	◇	◇	◇	◇
Gr. 38	-	-	-	-	-	-	-	-	-	-	-	-	-	-	-
Gr. 40	—	—	—	—	—	—	—	—	—	—	—	—	—	—	—
Gr. 42	-	-	-	-	-	-	-	-	-	-	-	-	-	-	-
Gr. 44	—	—	—	—	—	—	—	—	—	—	—	—	—	—	—

rückwärtige Mitte Stoffbruch Faden
center back fold straight grain
ЗАДНЯЯ СЕРЕДИНА СГИБ ТКАНИ

4

Besatz
facing
ОСТАЧКА

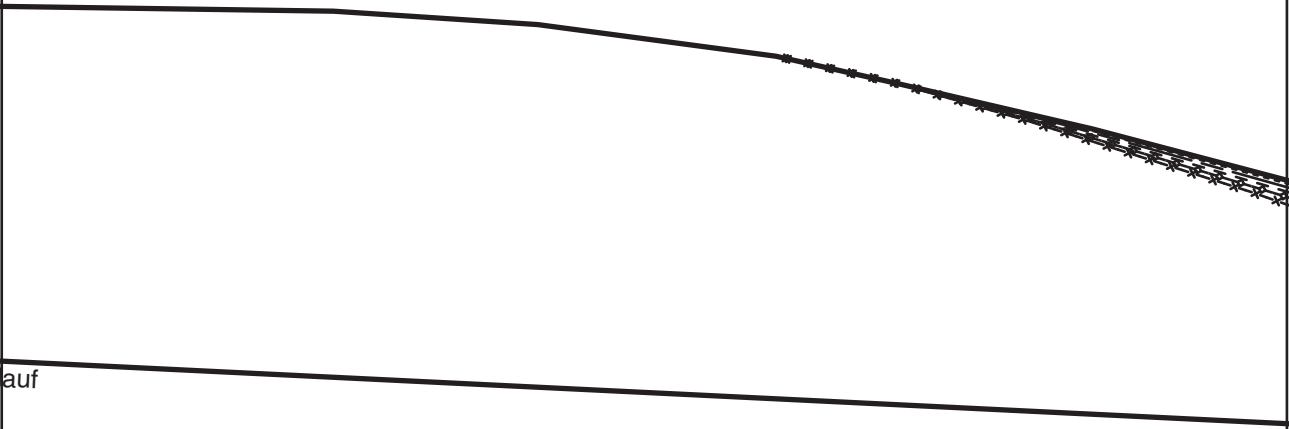
A, B, C

 2x

Mod. 1

urda[®]

www.burdastyle.de



auf

НАПРАВЛЕНИЕ НИТИ

2

Rückenteil
back
СПИНКА

A, B, C

 1x

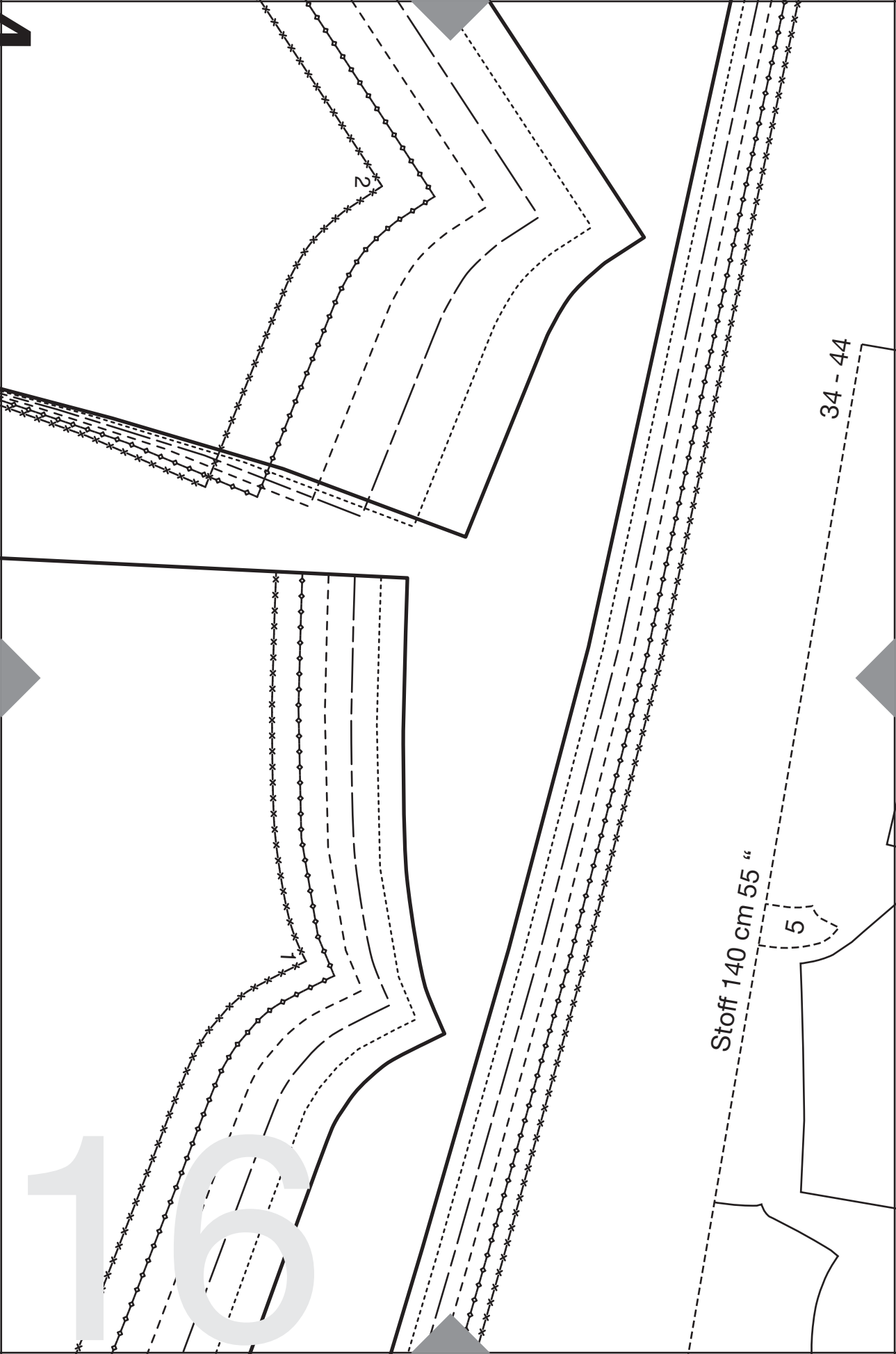
im Stoffbruch
on the fold
СЛИЗ ТКАНИ

Mod. 1

burda[®]

www.burdastyle.de

151



2

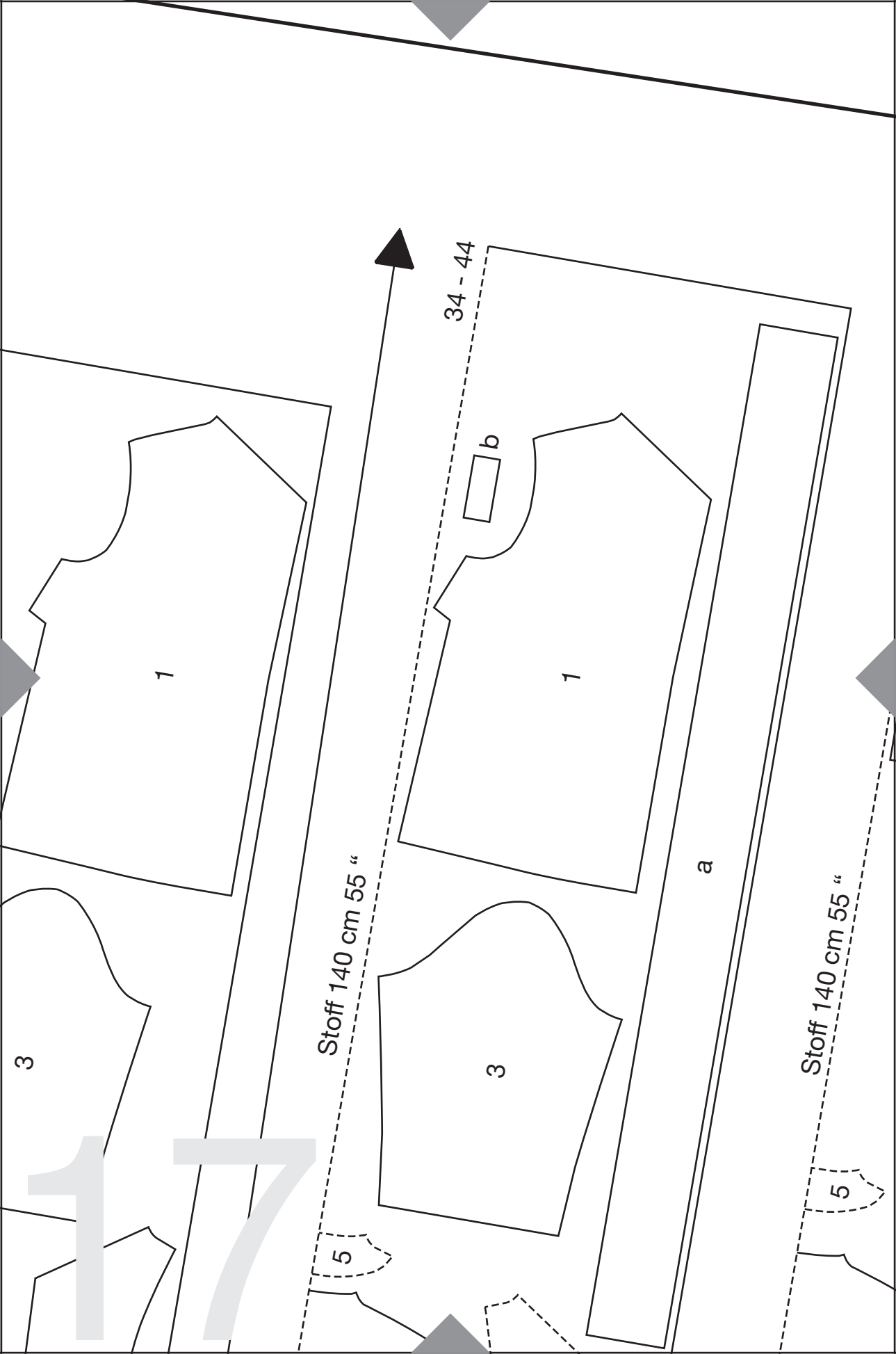
1

5

34 - 44

Stoff 140 cm 55 "

16



1

3

Stoff 140 cm 55 "

5

34 - 44

b

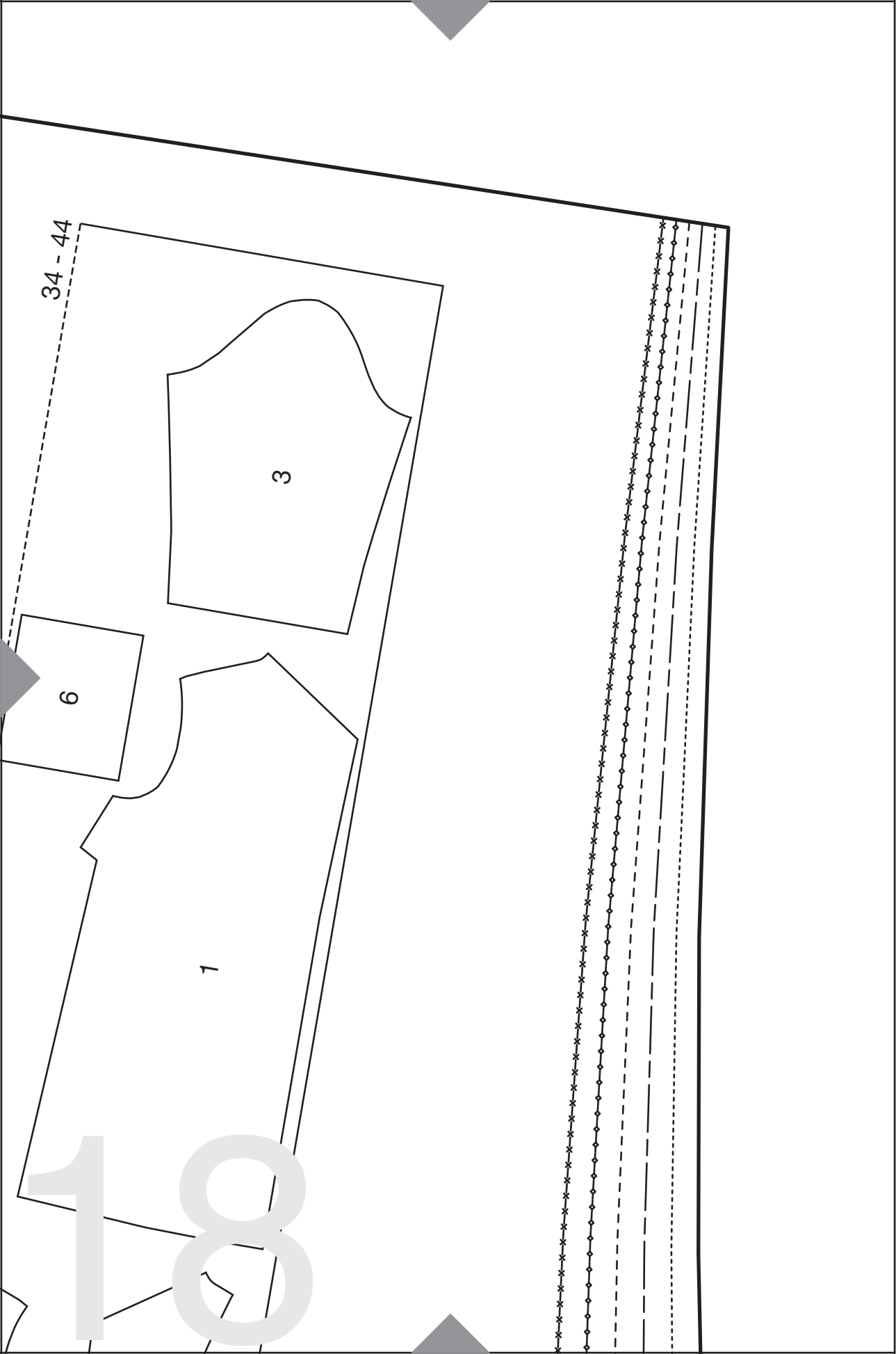
1

3

a

Stoff 140 cm 55 "

5



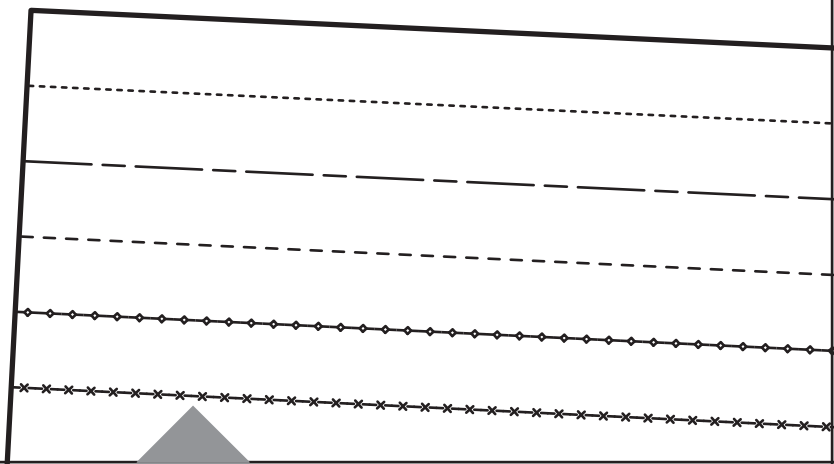
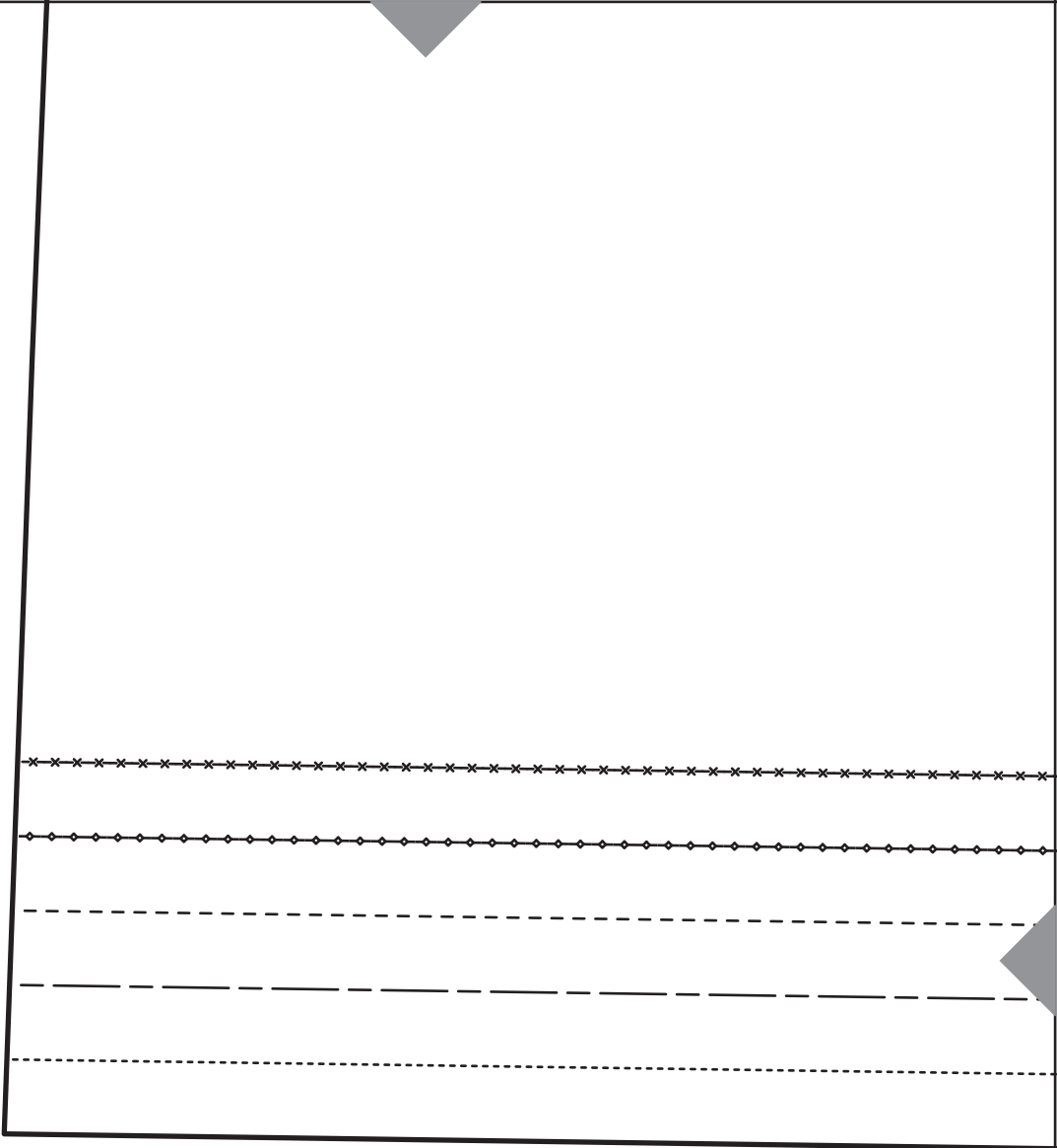
34 - 44

3

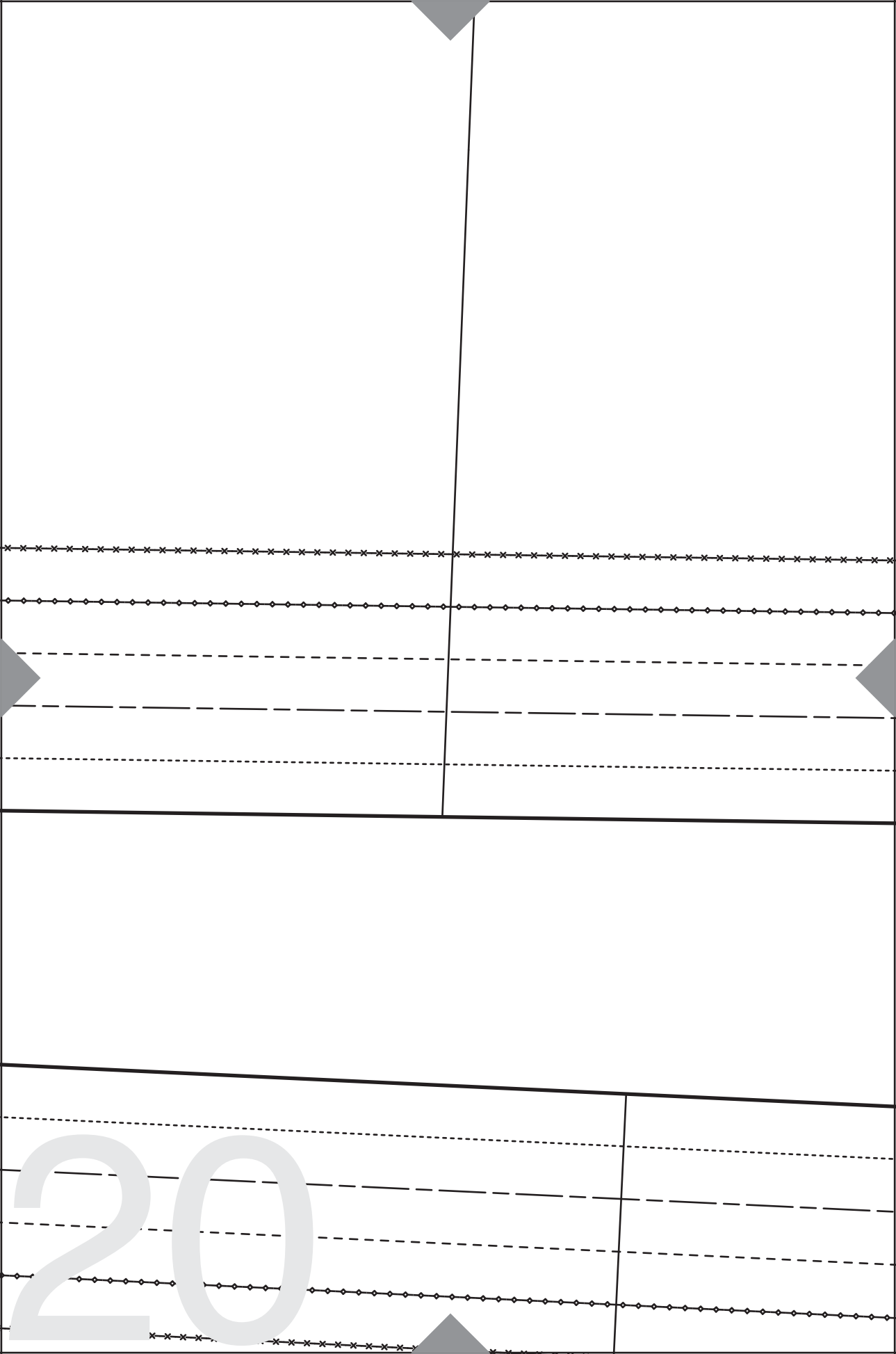
6

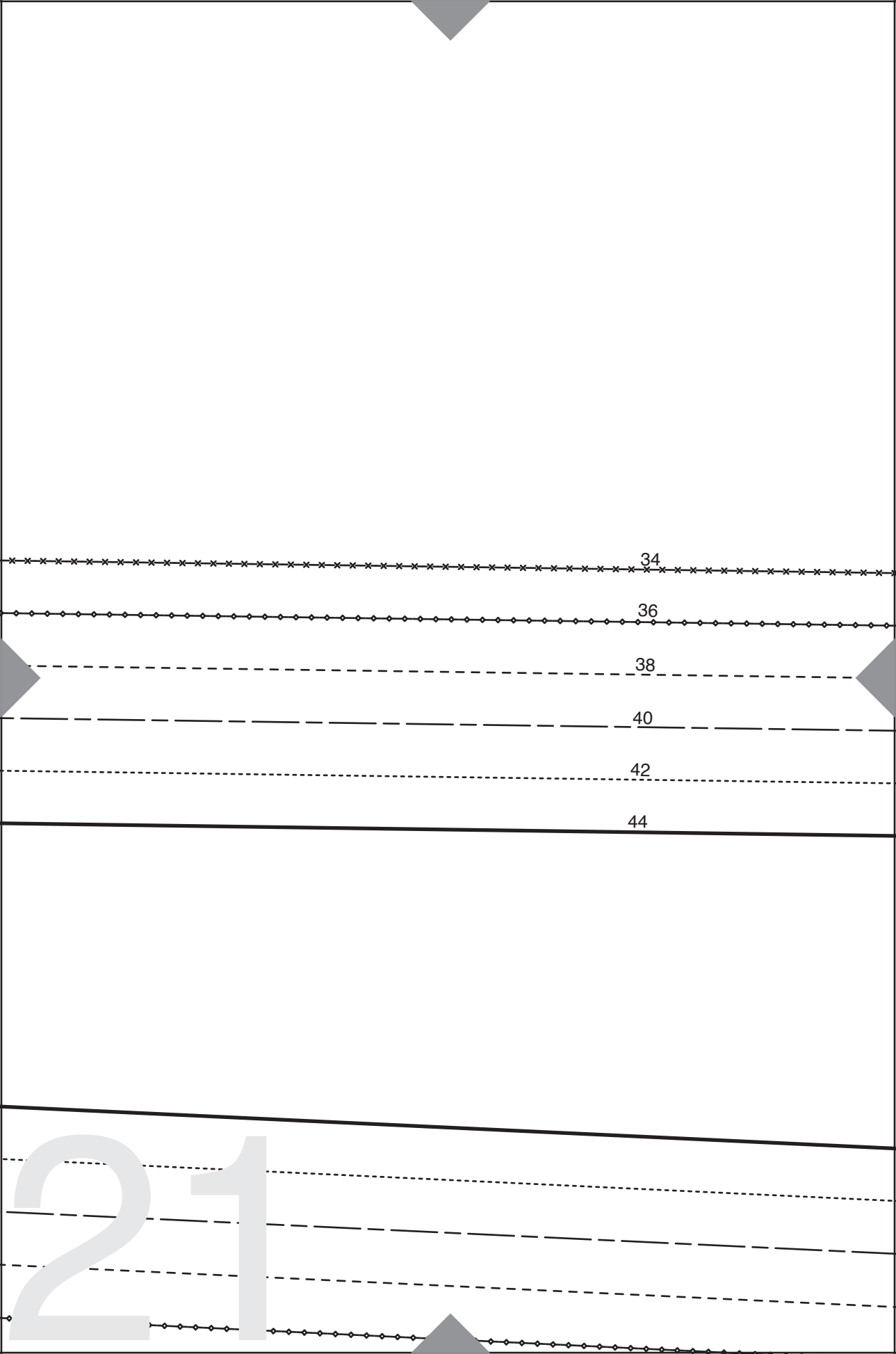
1

180



19





34

36

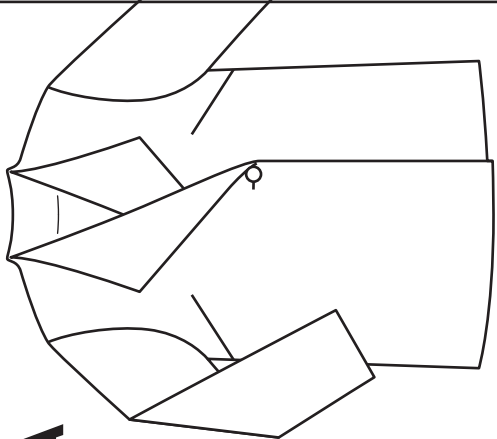
38

40

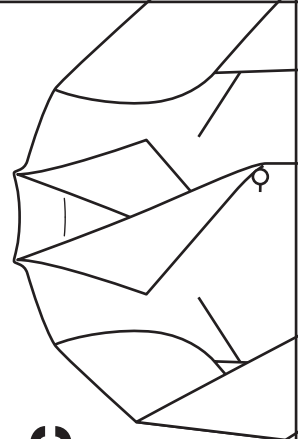
42

44

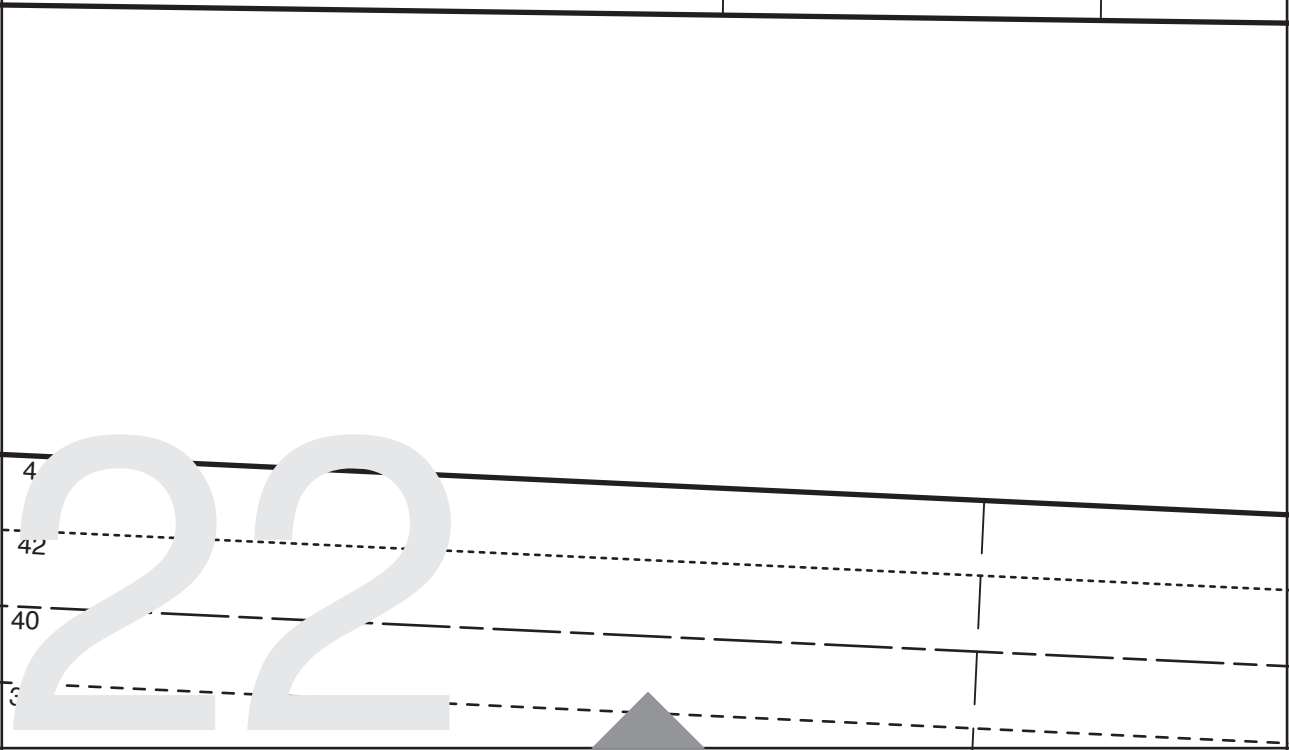
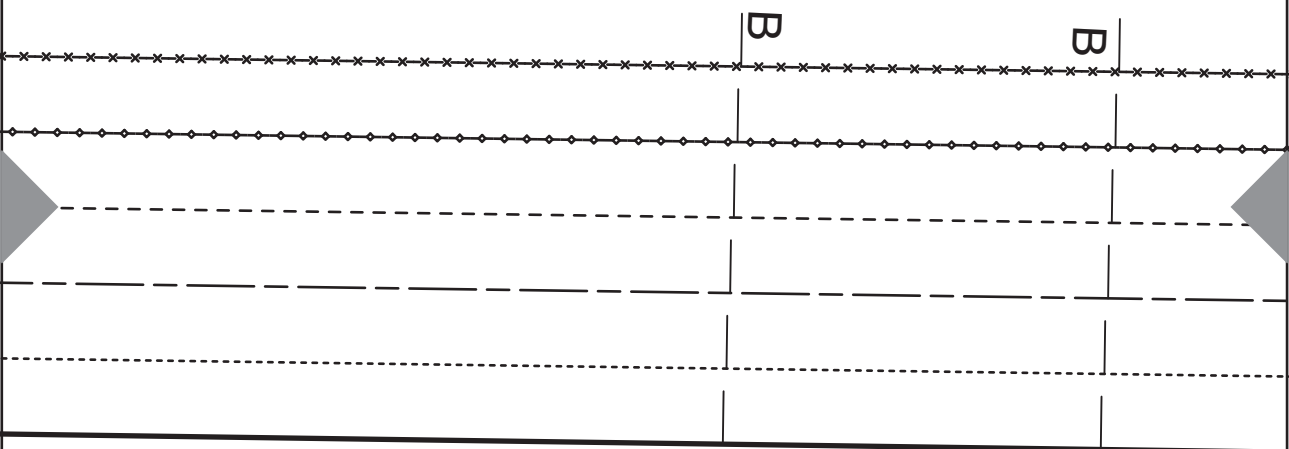
21



1A

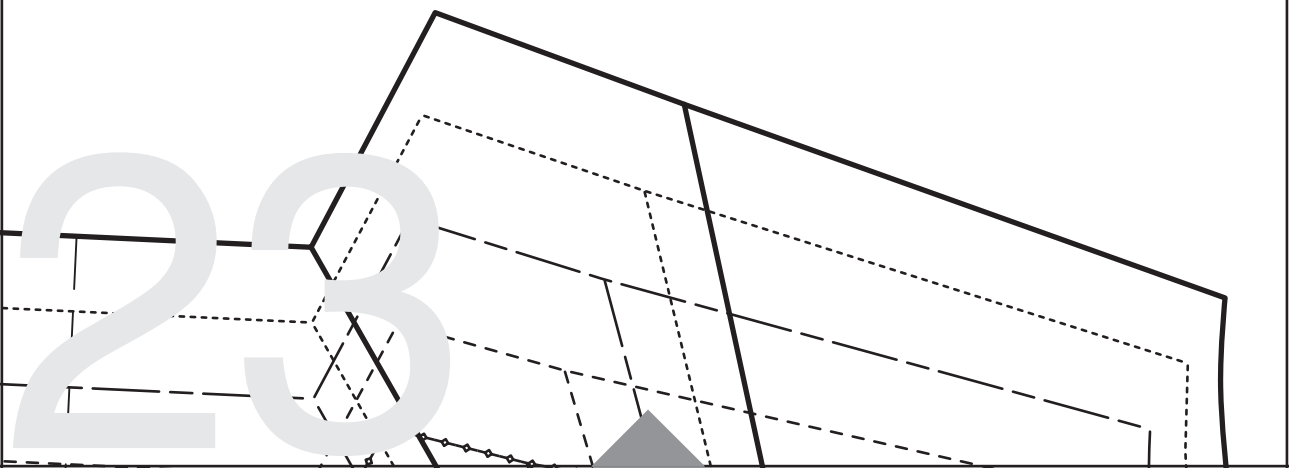
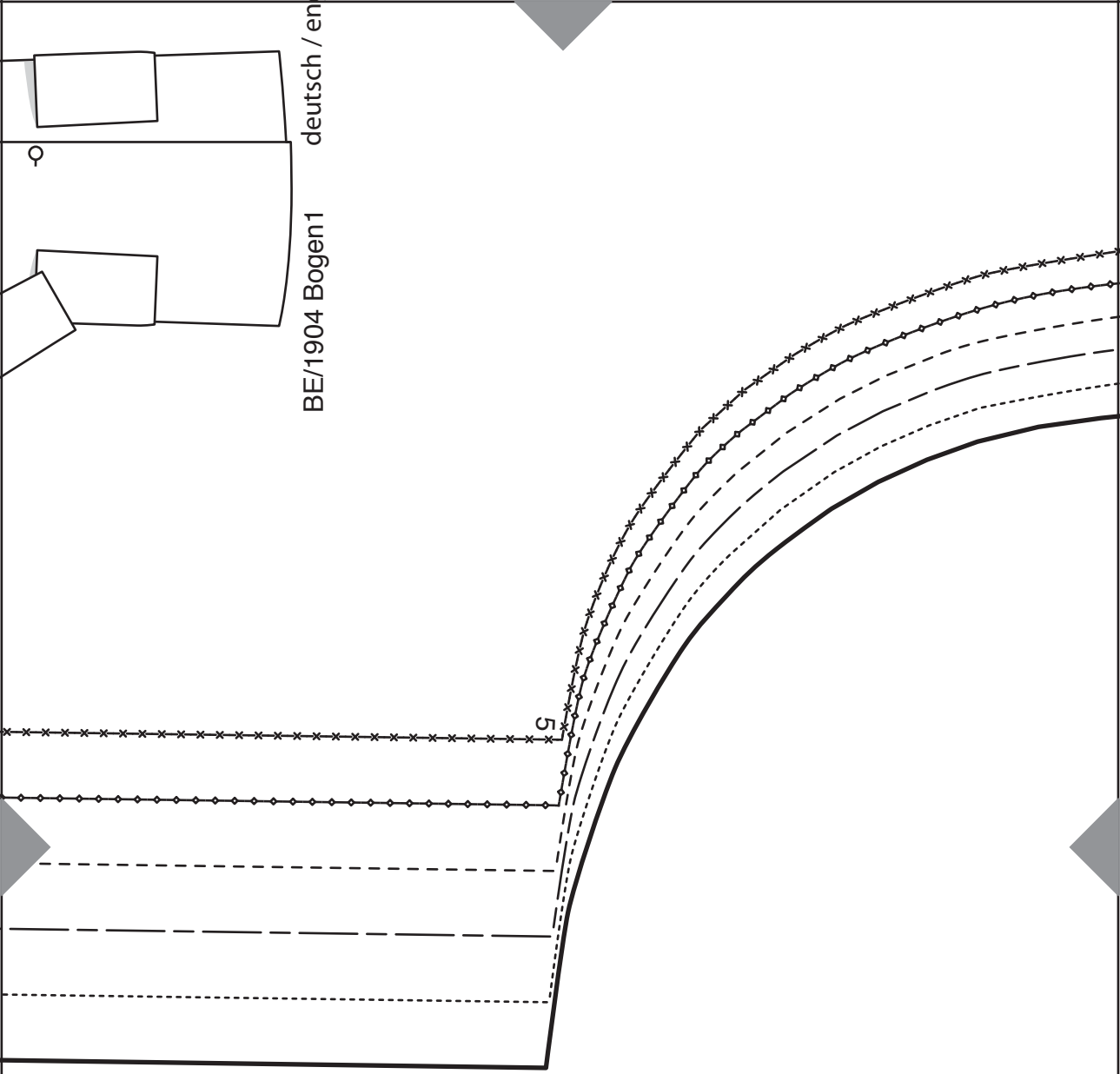


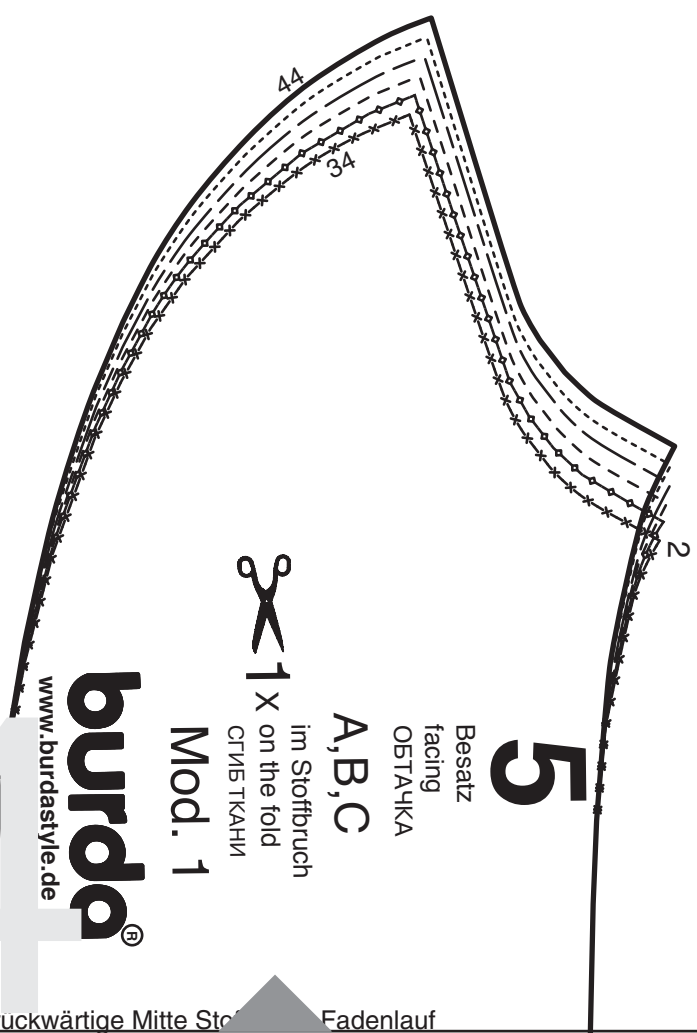
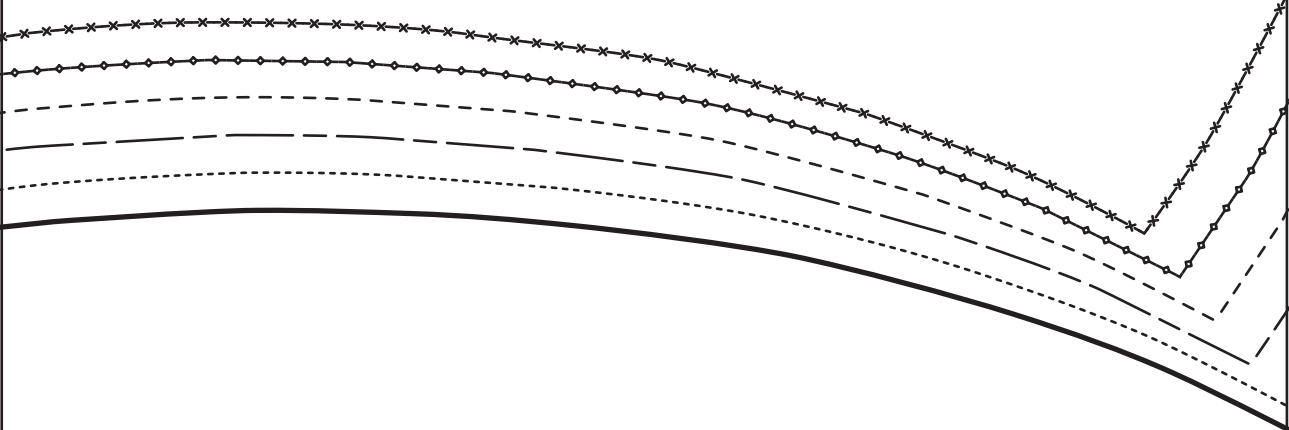
1C



4
42
40
3

22





5

Besatz
facing
ОСТАВКА

A,B,C



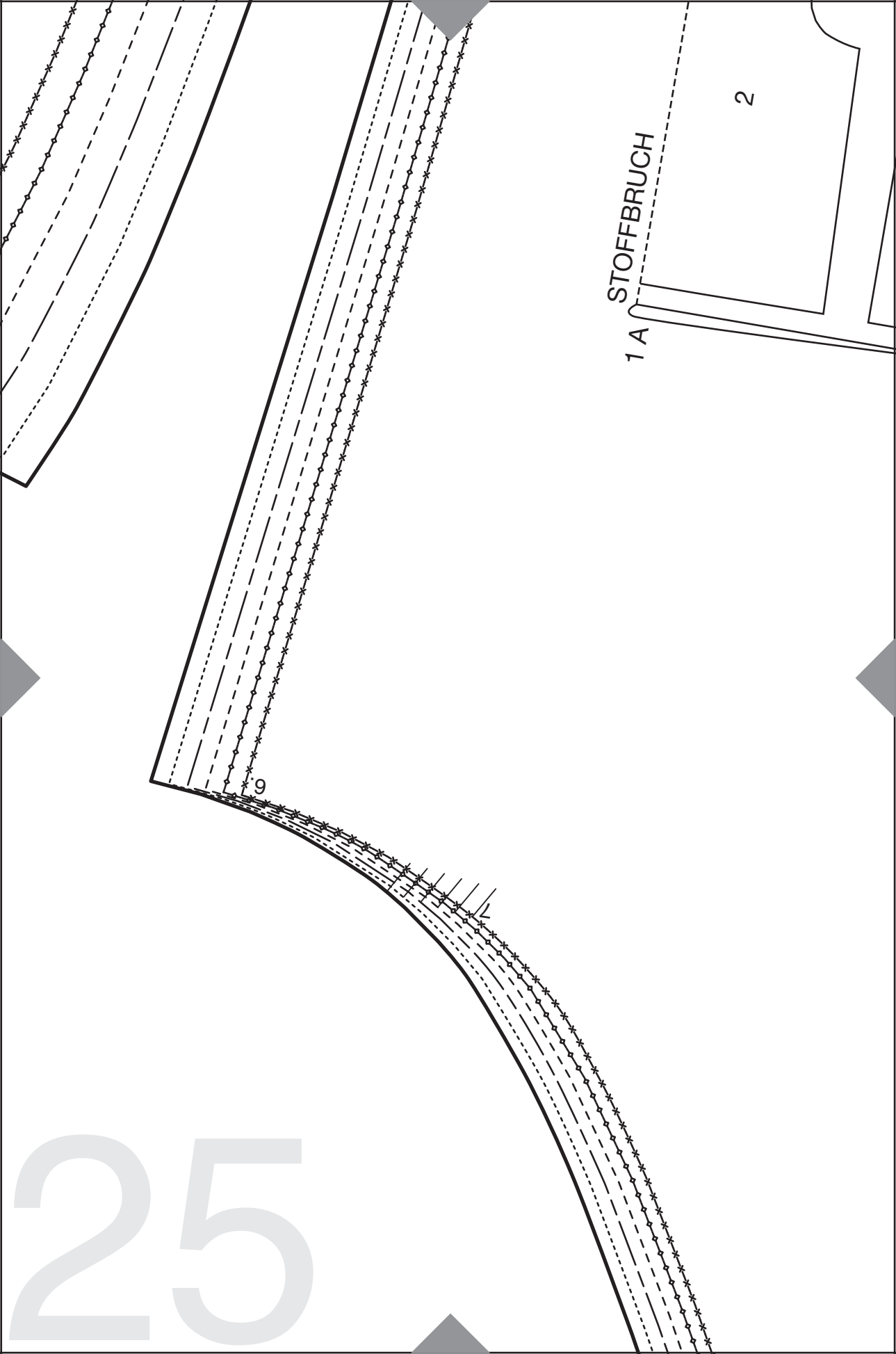
1 X on the fold
CTИВ ТКАНИ

Mod. 1

burda[®]
www.burdastyle.de

24

ruckwärtige Mitte Sto Fadenlauf



1 A
STOFFBRUCH


2

9

26

3

Ärmel
sleeve
рукав

A, B, C
 2x

Mod. 1

burda[®]
www.burdastyle.de

Fadenlauf
straight grain
НАПРАВЛЕНИЕ НИТИ

WEBKANTEN

4

STOFFBRUCH

1 B

2

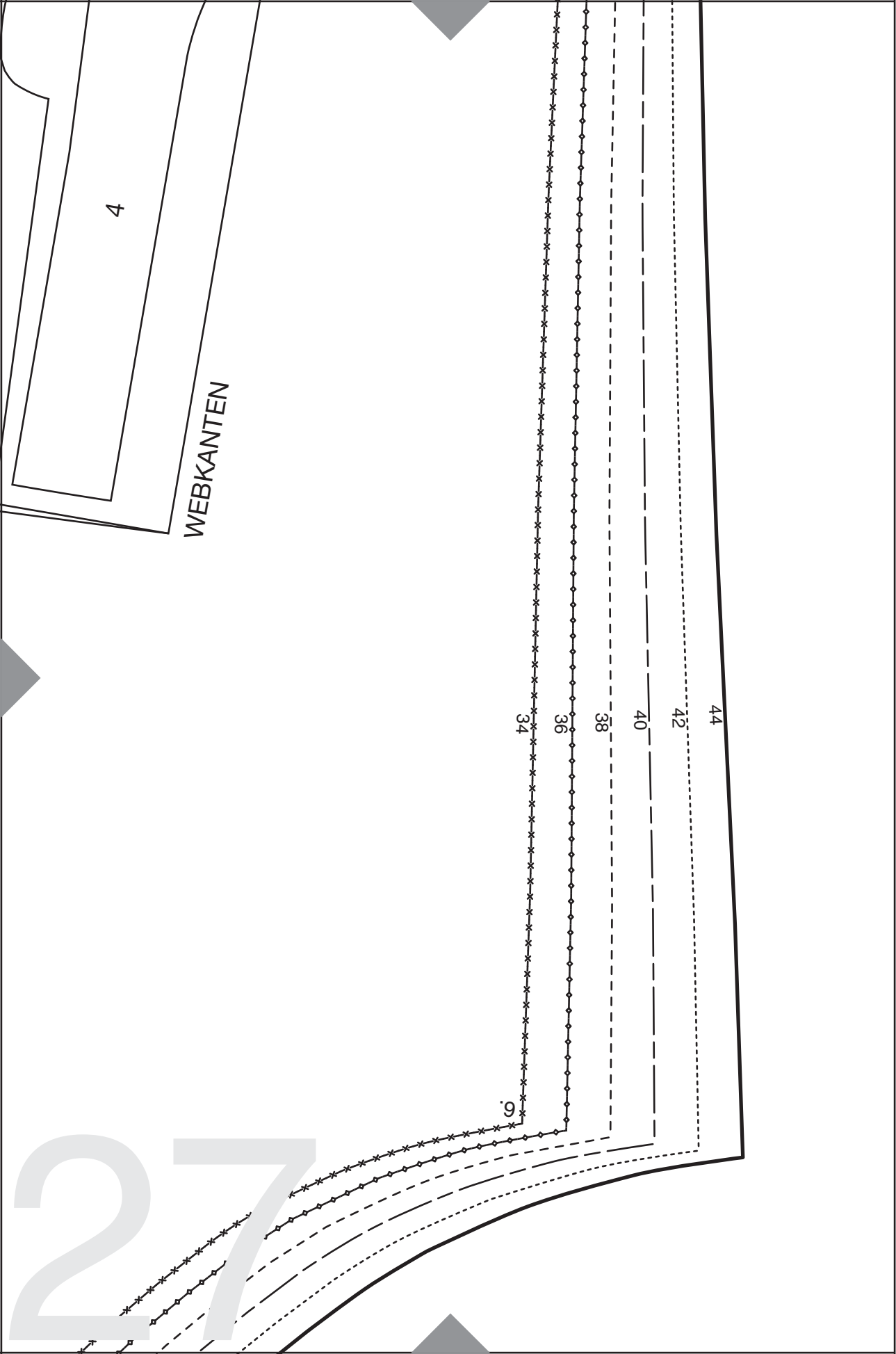
4

WEBKANTEN

STOFFBRUCH

1 C

2



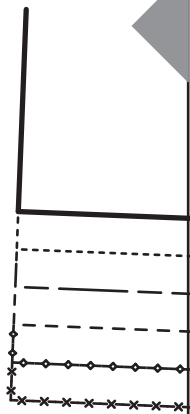
28

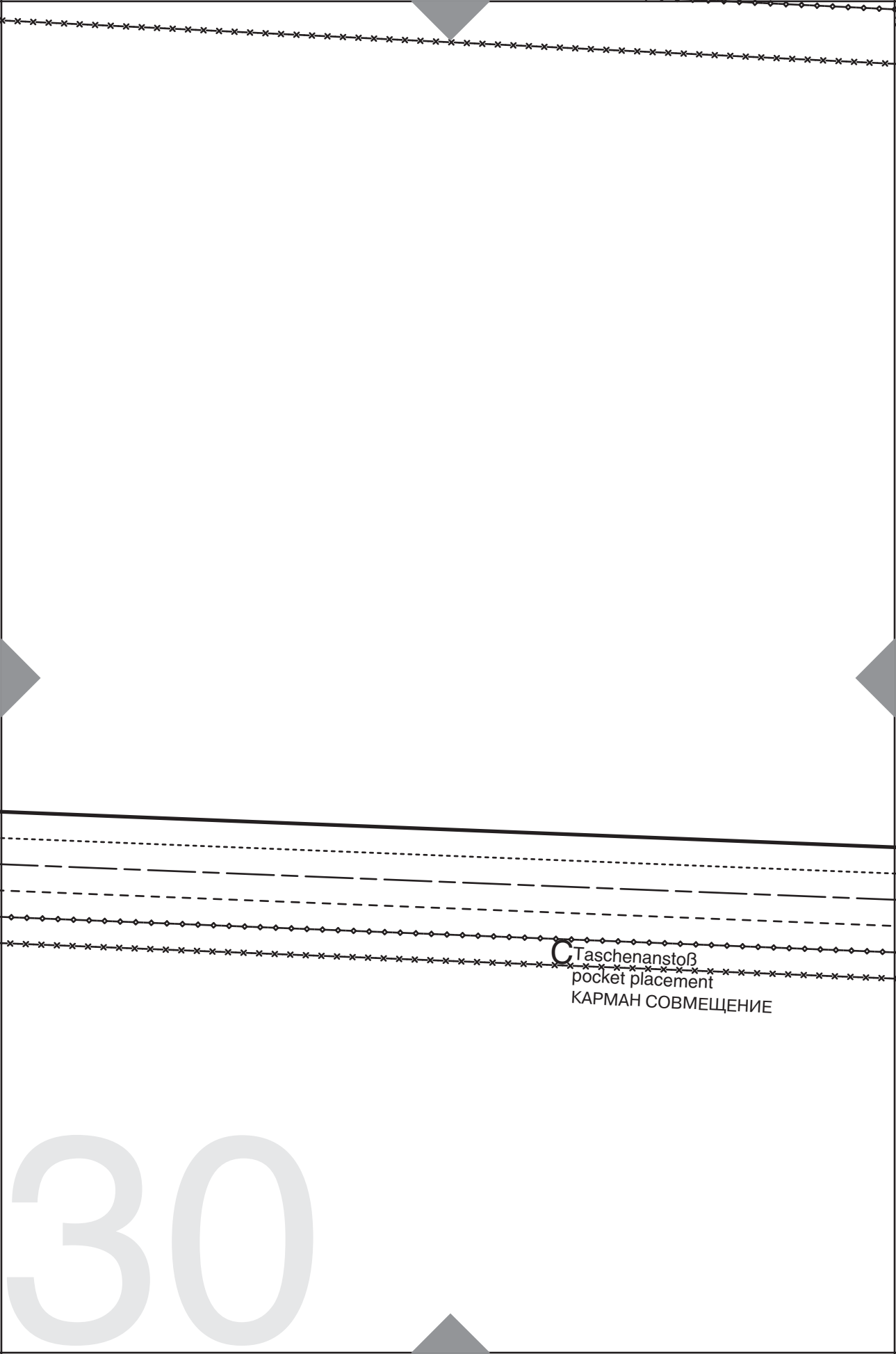
c

29

A

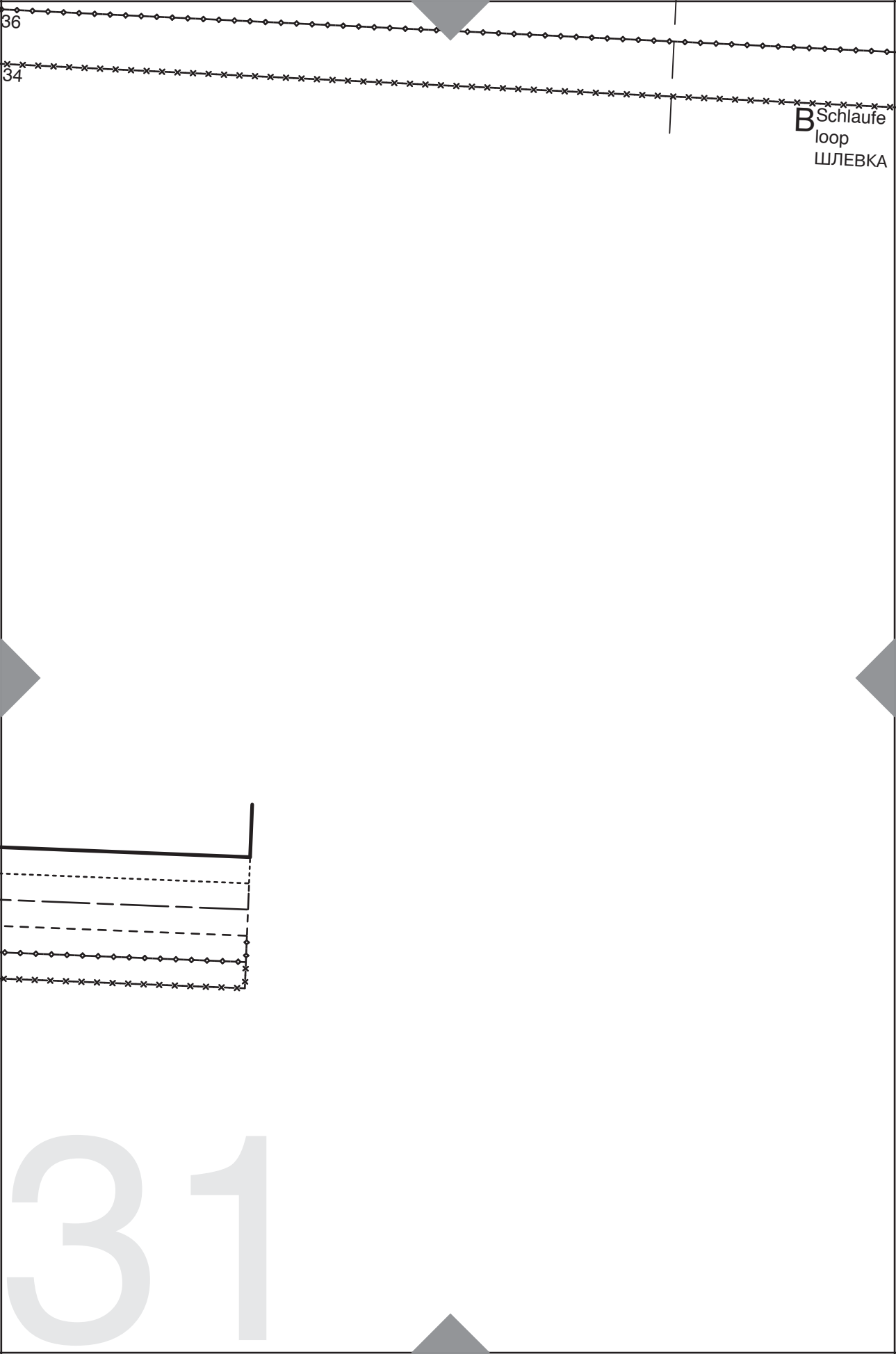
B





C Taschenanstoß
pocket placement
КАРМАН СОВМЕЩЕНИЕ

30

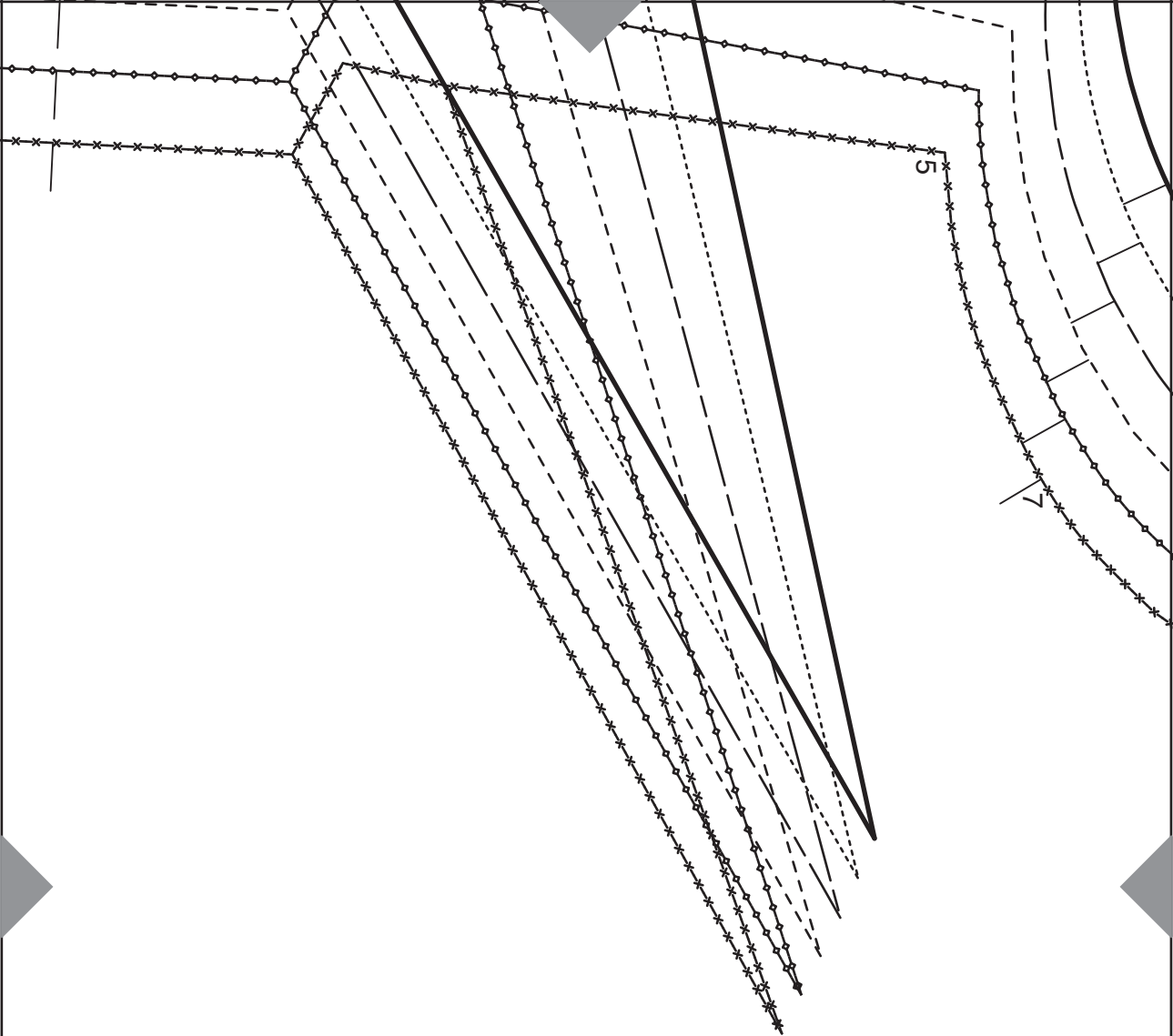


36

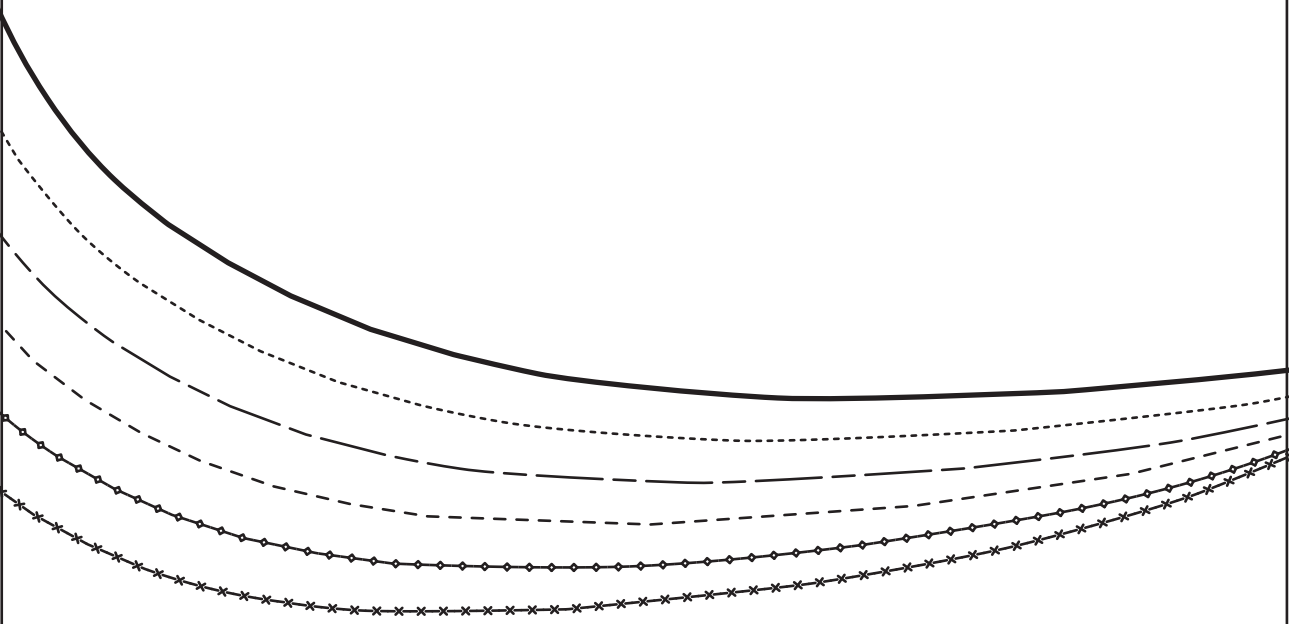
34

B Schlaufe
loop
ШЛЕВКА

31



center back fold straight grain
ЗАДНЯЯ СЕРЕДИНА СГИБ ТКАНИ НАПРАВЛЕНИЕ НИТИ



Vorderteil

front

ПЕРЕД/ПОЛОЧКА

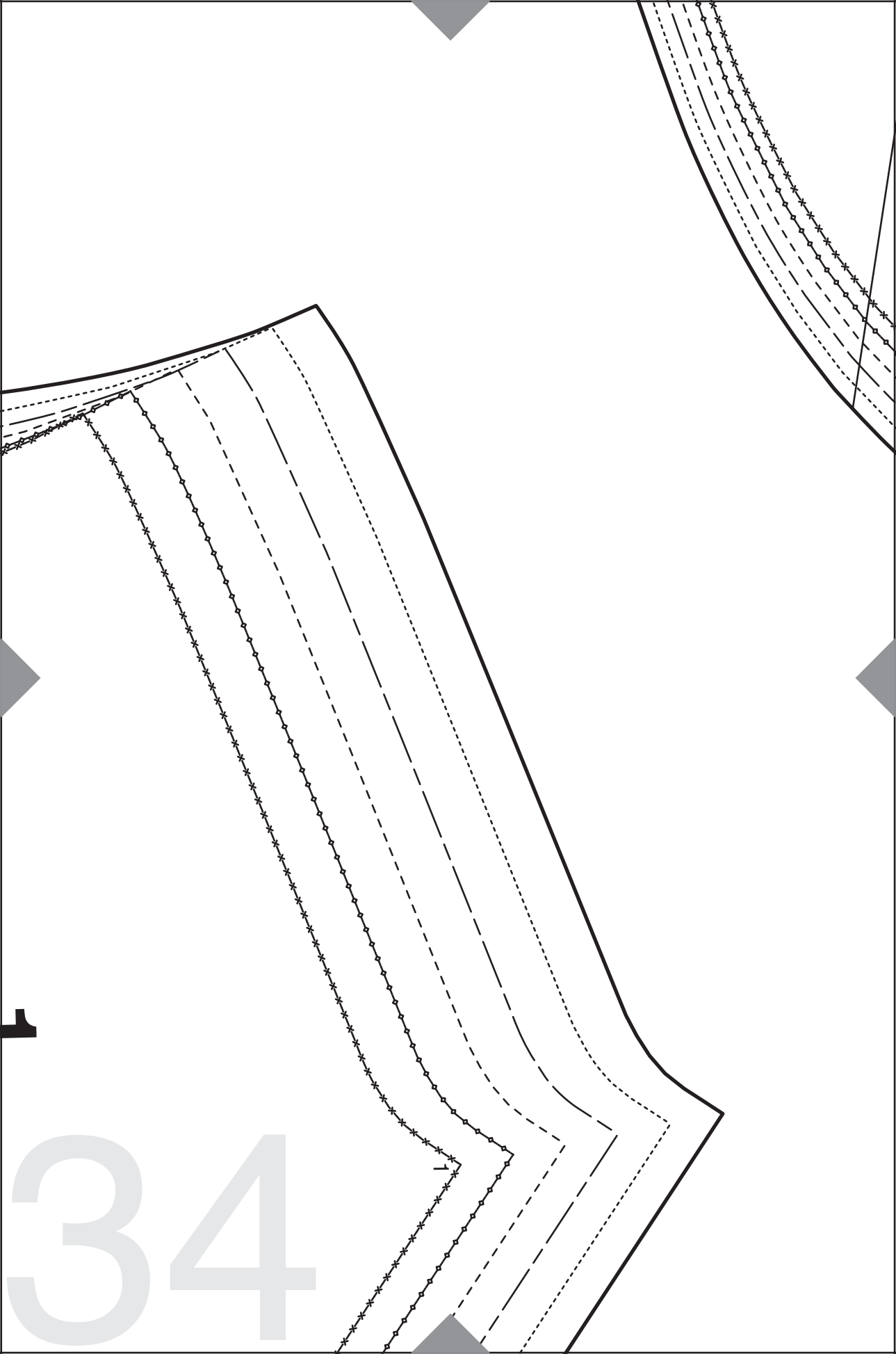
A, B, C



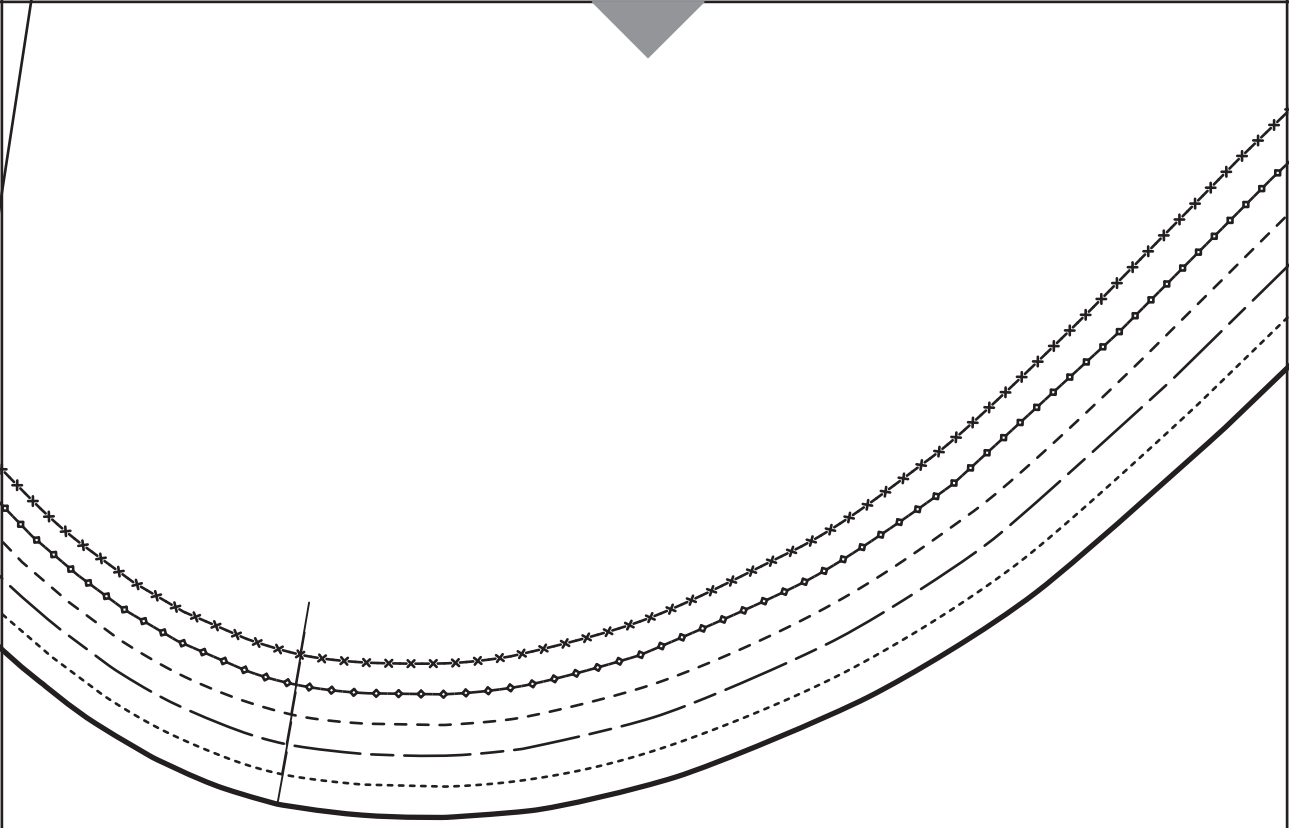
Mod. 1

burda[®]
www.burdastyle.de

33

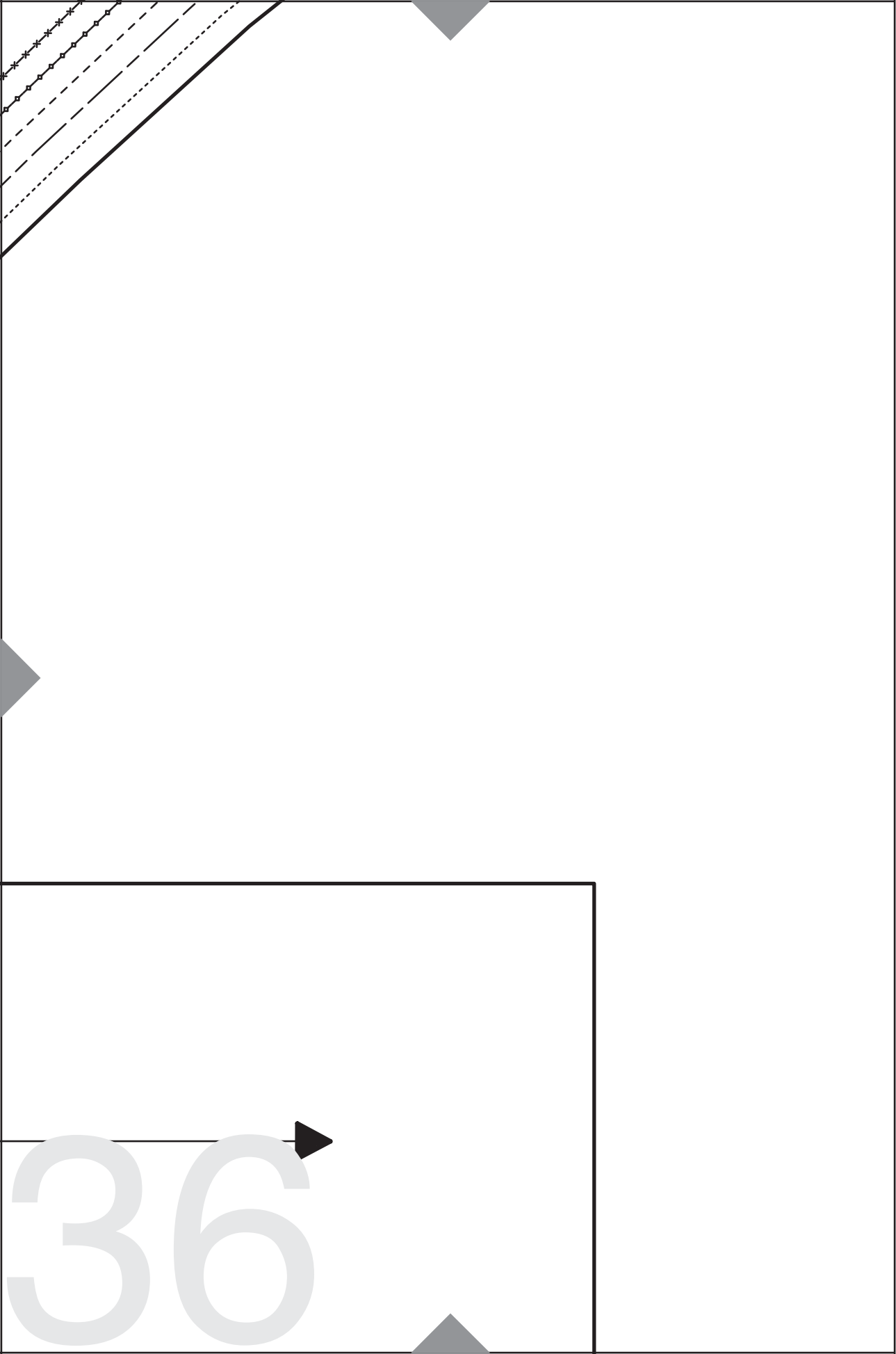


34



Fadenlauf
straight grain
НАПРАВЛЕНИЕ НИТИ

35



36

37

4

38

3

39

Taille
waist
ТАЛИЯ

vordere Mitte Fadenlauf
center front straight grain
ПЕРЕДНЯЯ СЕРЕДИНА НАПРАВЛЕНИЕ НИТИ

СХ

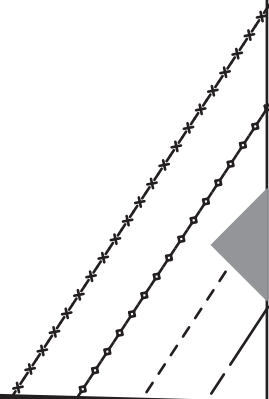
40

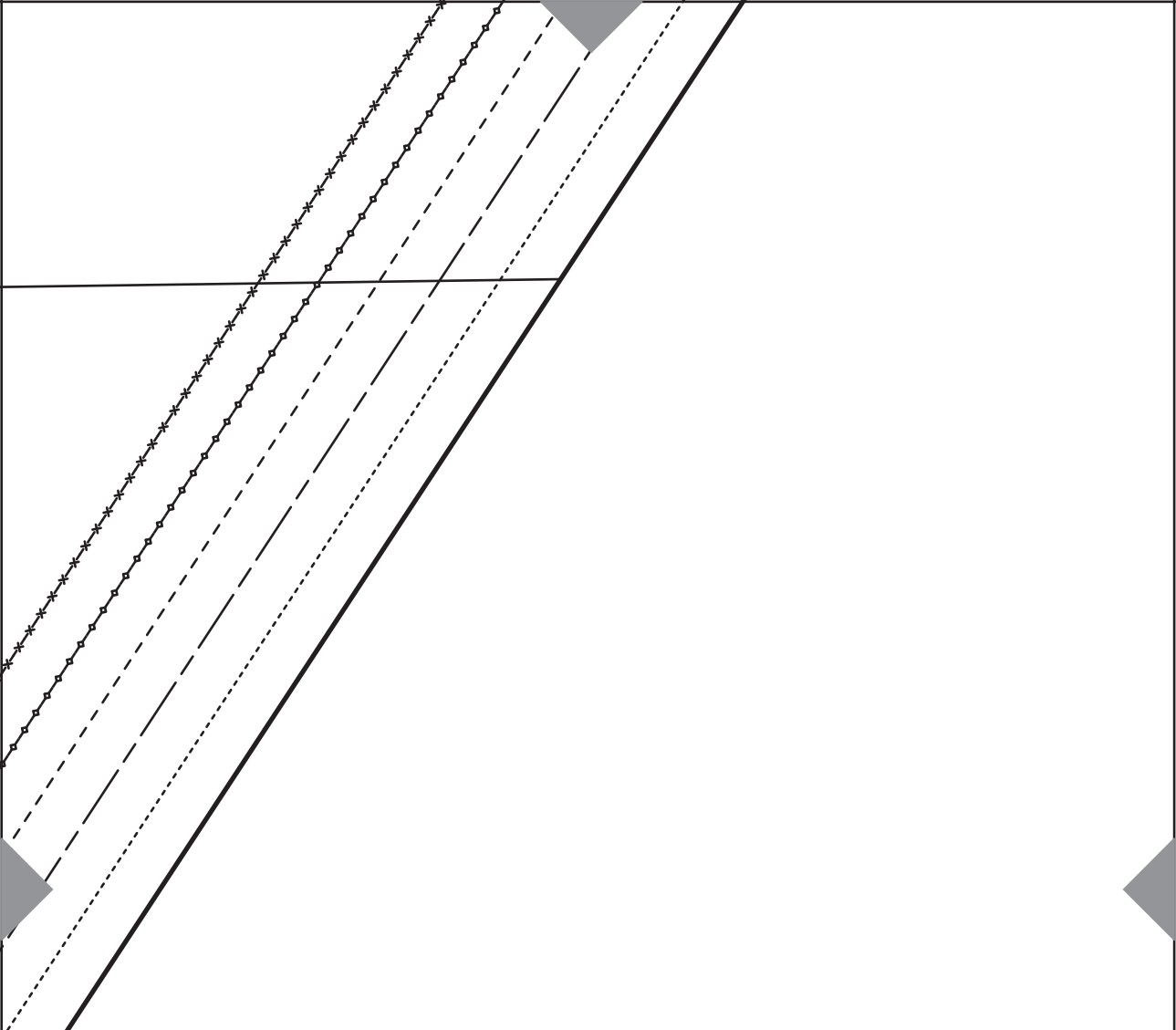
×

Umbruch
fold
CTMB

41

42





43

Besatz Umbruch

facing

ОБТАЧКА

fold

СГИБ

6.

Tasche

pocket

КАРМАН

C

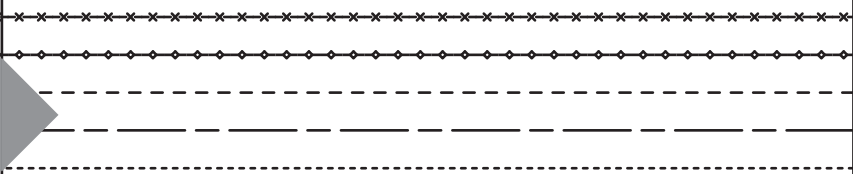


Mod. 1

burda[®]



44



45